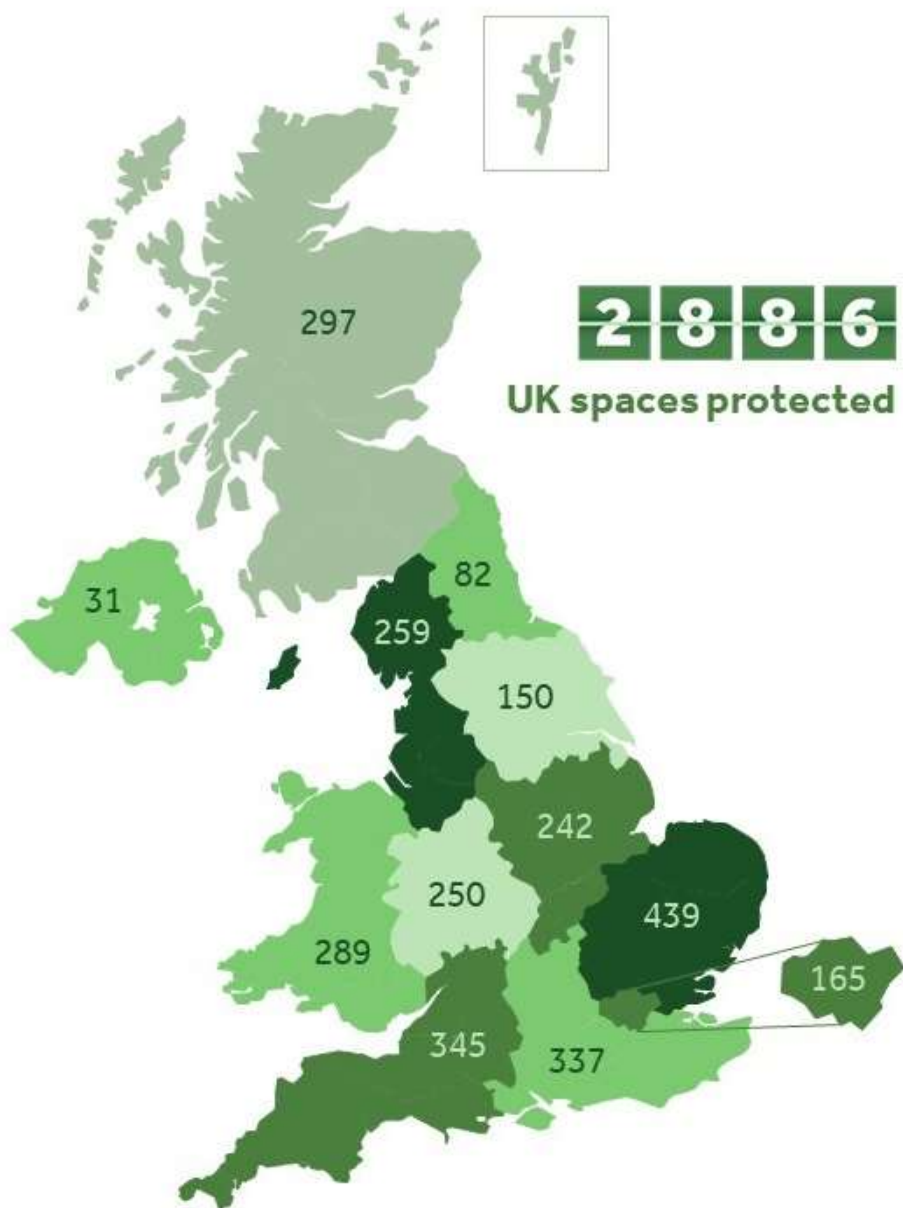




Protecting parks

Ensuring legacy, demonstrating value

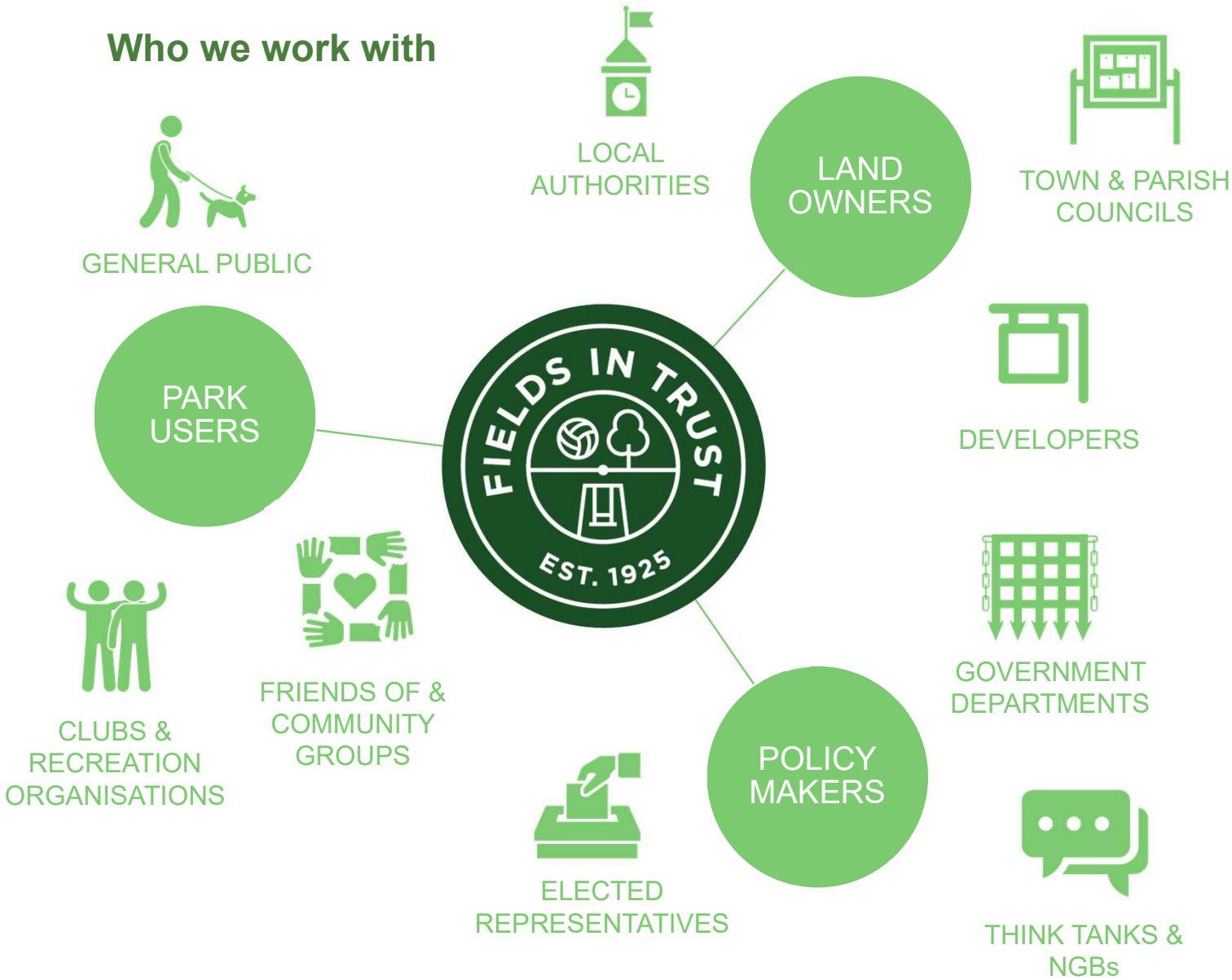
Tamsin Fudge
Head of Projects and
Stewardship



About Fields in Trust

- » Only UK charity working to champion, support and protect parks and green spaces in perpetuity.
- » Founded in 1925 almost 60% of the spaces we protect today have been secured since 2010.
- » Data and insight driven approach to deliver action to legally protect the future of parks and green spaces in areas of acute need.
- » Credible, trusted partner working with central, devolved and local government to achieve lasting social and environmental change.
- » ~75% local authorities use our “Guidance for Outdoor Sport & Play – Beyond the 6acre standard” to plan their green space management.

Who we work with



Vital but vulnerable

- » Universal public service but only 6% of parks in the UK are protected in perpetuity
- » As a non-statutory function the future of our parks and green spaces are continually threatened by development, policy and budget cuts
- » Parks and green spaces have a key role in:
 - » Mitigating climate change
 - » Connecting communities
 - » Benefiting health and wellbeing
 - » Providing accessible recreational space
 - » Pandemic recovery

To help all and any of these agendas, parks and green spaces need to be protected to ensure they are still there in the future



How we work with local authorities

We have reviewed our way of working in recent months and are rolling out a new approach for:

- » Partnering with landowners on multiple protection programmes
- » How we sustain our work for long-term stewardship

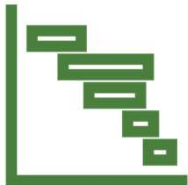
Partnership agreement



Comms and fundraising plan



Programme management



Data and analysis offer



Our Deed of Dedication*

A legal document that protects the green space forever:

- » Land is still owned and managed by the landowner
- » Changes/improvements to the land are possible through a Field Change Request
- » Flexible for event delivery and climate mitigation plans etc
- » Usually one Deed for one green space

*Minute of Agreement in Scotland



The protection process

- » Map spaces and agree best fit for landowner objectives
- » Sign a partnership agreement for multiple protections
- » Project teams and legal teams work together to:
 - » Submit applications for each space
 - » Account for future plans or changes
 - » Provide land registry documents/titles etc
- » Accurate maps on ArcGIS built
- » Deeds signed and sealed by both parties
- » Protection registered with Land Registry

Stewardship and legacy

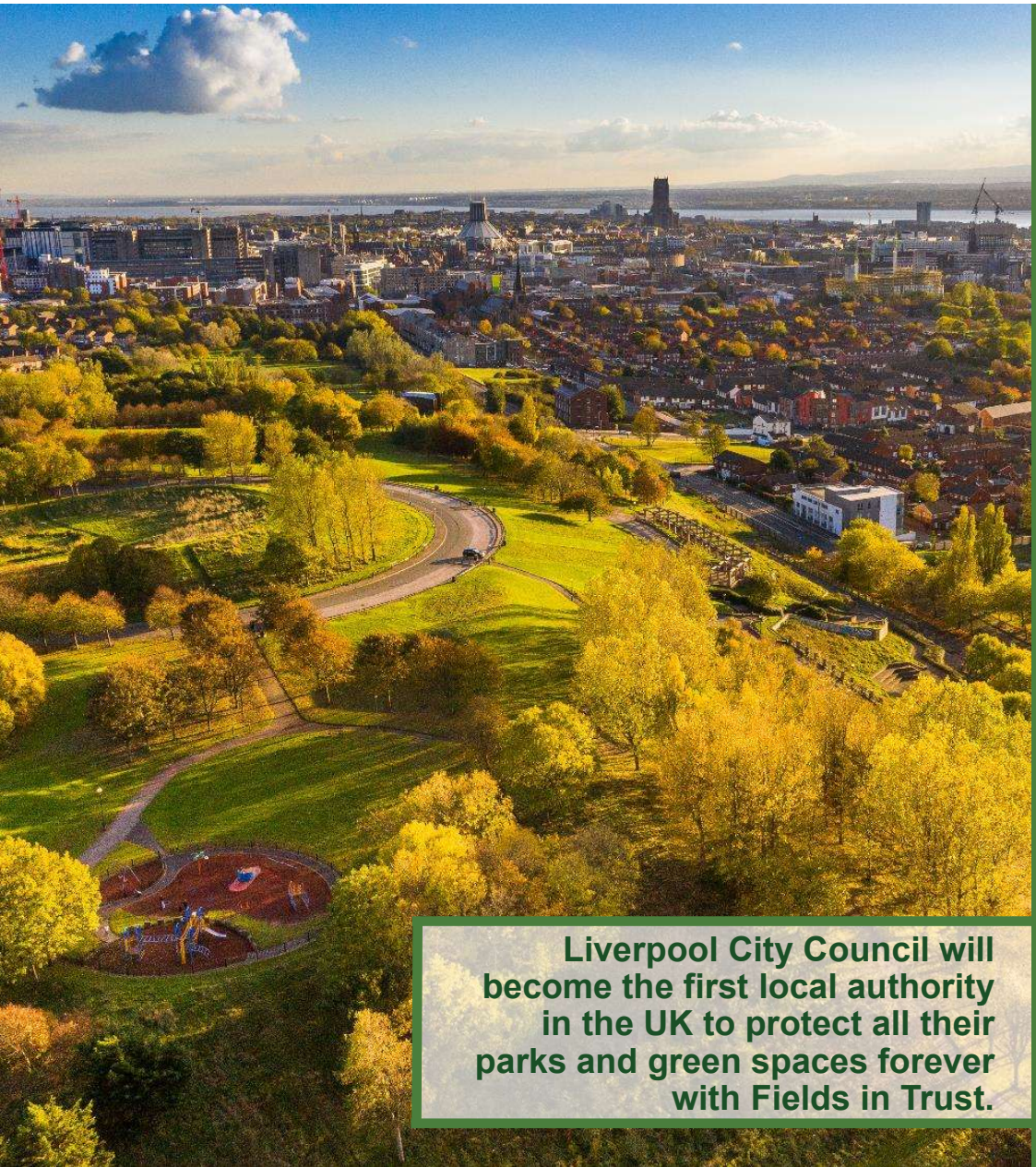
The very act of protecting green spaces is a demonstration of their value to people and the planet, for today and for the future.

Fields in Trust provides a stewardship service to all landowners that have protected with us, supporting change requests for:

- » Leases, easements, wayleaves
- » Changes and adaptations to the space and buildings
 - » Ancillary/non-ancillary
- » Events and festival planning
- » Land transfers
- » Ad hoc advice and guidance

We know that green spaces need to adapt to local, national and global demands – this means they continue to work hard for their community





Liverpool City Council will become the first local authority in the UK to protect all their parks and green spaces forever with Fields in Trust.

Protection Partner: Liverpool

- » Liverpool City Council's pioneering decision to protect ALL parks and green spaces in the city was led a vision for all citizens to live within a ten-minute walk of a protected park or green space in perpetuity
- » This commitment has launched a two year programme of legal protection and community engagement work to protect every park and green space in the city
- » Will create a legacy of valuable parks and green spaces, protected for future generations



Local parks have been a lifeline during the pandemic, but not all communities have equal access to them, and the situation is getting worse.

Annual Green Space Index

- » The Green Space Index is a comprehensive analysis of the provision of parks and green spaces across Great Britain.
- » Interactive tool providing data on access to green space at a local, regional and national level; whilst tracking changes over time
- » Enables parks and green spaces to be placed at the heart of wider policy agendas focussed on pandemic recovery, levelling up and greener futures
- » Identifies the inequities of provision and its relationship to health and wellbeing
- » Supports the prioritisation of parks in areas with higher levels of ethnic minorities and lower socio-economic groups
- » Enables effective planning of green infrastructure to mitigate climate change at local level

2021 Green Space Index headlines



2.78m
people

in Great Britain not living within a ten-minute walk of a green space



31.43
square metres

of green space provision per person in Great Britain



201k
hectares

of total green space provision in Great Britain



6.38
per cent

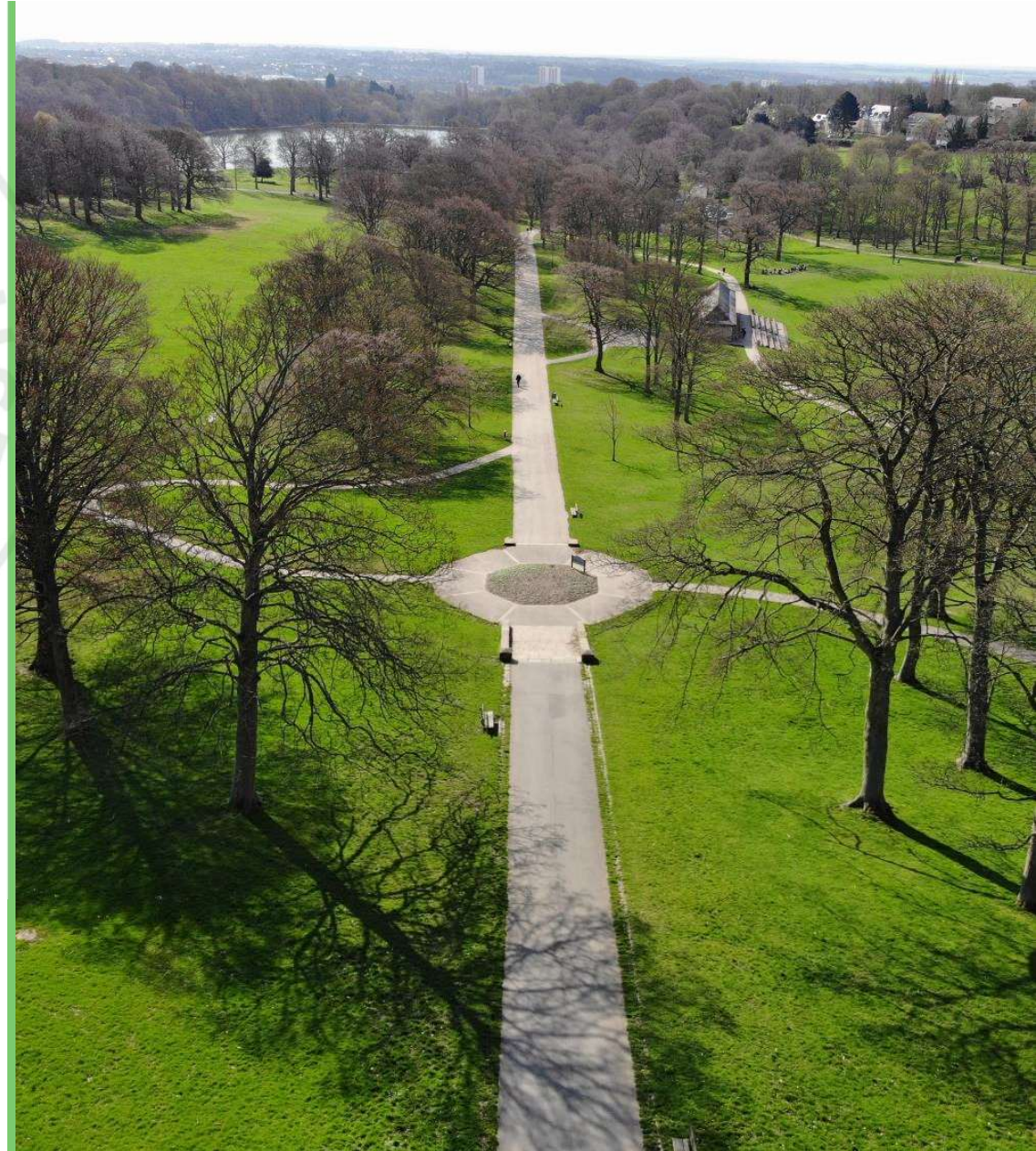
of green space provision in Great Britain legally protected

Cited by: The UK Climate Change Committee, The Runnymede Trust, No Place Left Behind Commission, Arup Global Research, Local Government Association, Friends of the Earth, Town and Country Planning Association and many others.

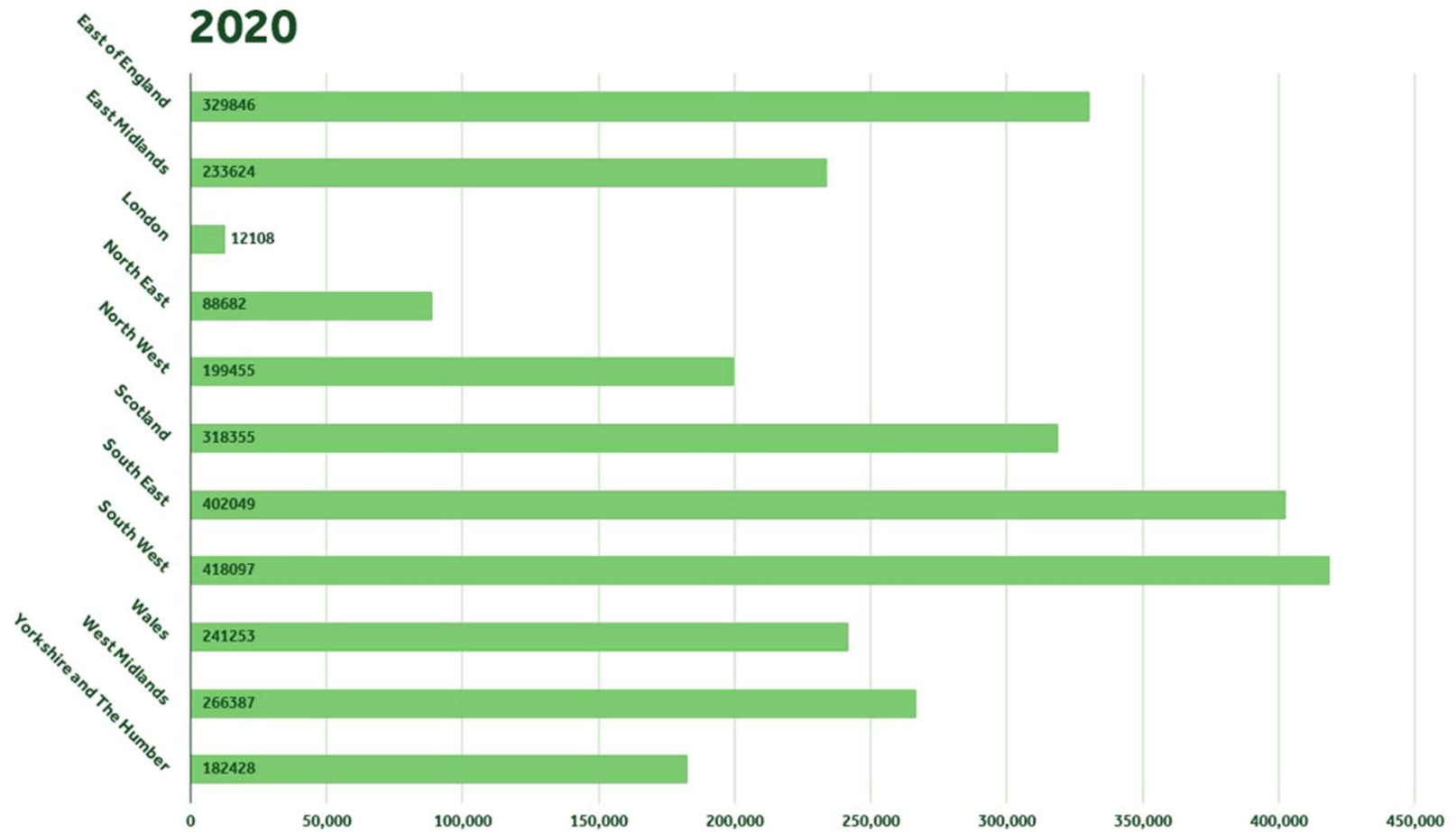
Population projections

- » By 2040 the amount of green space provision per person will have reduced by 7.6%.
- » In over 100 local authority areas the provision per person will reduce by more than 10% in the next 20 years.
- » In 2040 only four of Britain's nations and regions will exceed the minimum standard of green space provision.
- » By 2040 London will have fallen below half the minimum standard of provision.
- » Over the next five years alone there will be a 6.5% increase in the number of people not living within a ten-minute walk of a park or green space, to nearly 2.87 million.

*Statistics taken from comparing the Green Space Index 2021 to population projection data



GSI: people not within a 10minute walk of a park or green space



Revaluing Parks and Green Spaces, 2018

- » Produced the first ever robust, welfare weighted economic valuation of parks to our collective health & wellbeing
- » Frequent use of parks and green spaces generates £34.2 billion of wellbeing value every year
- » Parks have a role to play in addressing physical health, mental wellbeing, community cohesion
- » Lower socio-economic groups & BAME communities value parks and green spaces double and triple the average

KEY FINDINGS



Wellbeing Value associated with the frequent use is worth £34.2 billion per year to the entire UK adult population



The Total Economic Value to an individual is £30.24 per year



Parks save the NHS around £111 million per year based solely on a reduction in GP visits

Cited by: MHCLG/DLUHC, NHS/Public Health England, Scottish Parliament, Welsh Government, Future Generations Report, Green Space Report by Mayor of London and many political, academic and national media reports.

Climate emergency strategies

Local authorities have a responsibility to develop climate change plans to meet national targets, looking at:

- » Green infrastructure plans
- » Air pollution
- » Carbon reduction
- » Urban heat island effect
- » Biodiversity and tree planting

Parks and green spaces are key to the success of those plans

So, we are exploring the contribution protected green spaces make locally, and building an environmental metric into our Green Space Index.





Fields in Trust is the only UK charity protecting our parks and green spaces in perpetuity. Our green spaces have never been more important – and have never been under such threat. Your support will make a difference, forever.



www.fieldsintrust.org @FieldsInTrust

For more information, please contact: Tamsin Fudge, Head of Projects and Stewardship e: Tamsin.Fudge@fieldsintrust.org t: 020 7427 2115

Green Spaces for Good