

# Preserving parks in perpetuity

## The Liverpool experience



Liverpool  
City Council

**Tamsin Fudge**  
Head of Projects and  
Stewardship

**Helena Cunningham**  
Project Lead Liverpool City Council



**Liverpool City Council will become the first local authority in the UK to protect all their parks and green spaces forever with Fields in Trust.**

## Why Fields in Trust, why now?

- » The events of the last two years have demonstrated the importance of access to greenspace to support physical and mental health with record numbers of visitors to Liverpool parks
- » The Council had been on a bumpy journey around its green credentials following now abandoned plans to develop some high profile greenspaces (not parks) in an attempt to boost council tax revenue in response to austerity
- » 2019 declaration of a climate emergency made us look differently at the importance of green spaces in our efforts to mitigate the impacts of climate change



## The Liverpool Context

We estimate that the overall size of our parks and green spaces asset is more than 1,450 hectares (3,600+ acres).

Of this over 1,000 hectares are defined and managed as public parks and the remainder (under 450 hectares/1000 acres) are incidental green spaces or highways assets such as grass verges, public squares, green buffers etc.

The idea for the partnership was generated by the community, championed by the Liverpool Parks Friends Forum

Cabinet approved the partnership on 23 March 2021 with an aim to protect over 100 sites by 2023.

Process requires dedicated project manager and legal support to assemble the required title deeds, protected covenants etc.

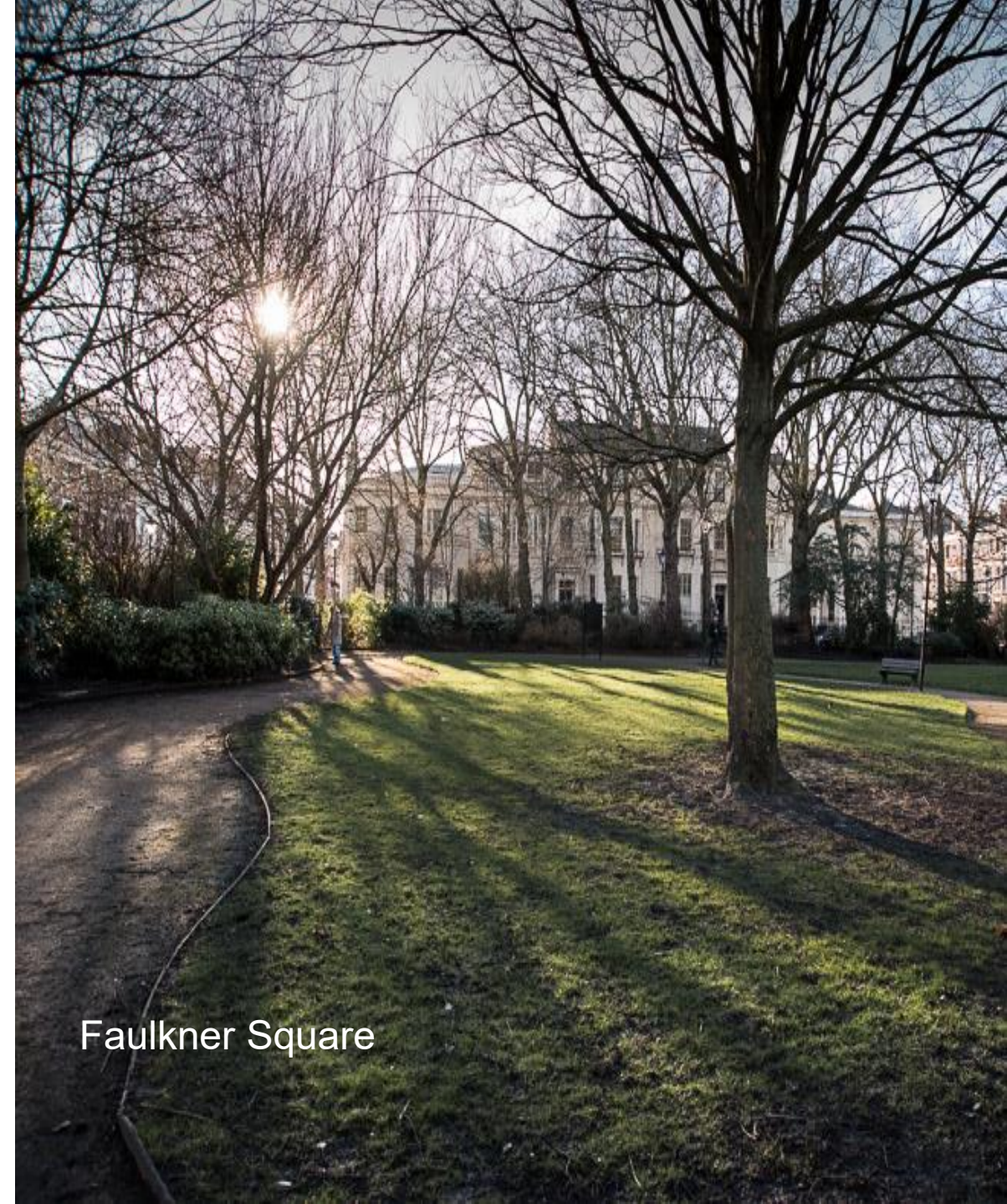


Newsham Park



## The Liverpool Context

- » Strong political and public support- winning hearts and minds and re-establishing green credentials
- » Part of a strategic plan to not only protect green space but create urban solutions to mitigate the threat of climate change through our Urban Green Up programme



Faulkner Square

## Work over the last 12 months

- » Site surveys with for the phase 1 have taken place
- » Applications for these sites have been submitted
- » All legal documentation has been shared with FIT
- » Maps have been discussed with Friends Groups, showing the inclusion and exclusion zones
- » Unveiling events being planned for the 20 sites
- » Linking with local corporates with a green ambition
- » Identifying local writers and artists to create a green themed fundraising campaign
- » Creating a Liverpool-based case study for an APPG report on Left Behind Neighbourhoods
- » Building stories and PR moment with Cabinet Member and Friends of Parks groups
- » BBC Radio Merseyside coverage with Vox-Pops and interviews
- » Asset creation to promote protection partnership

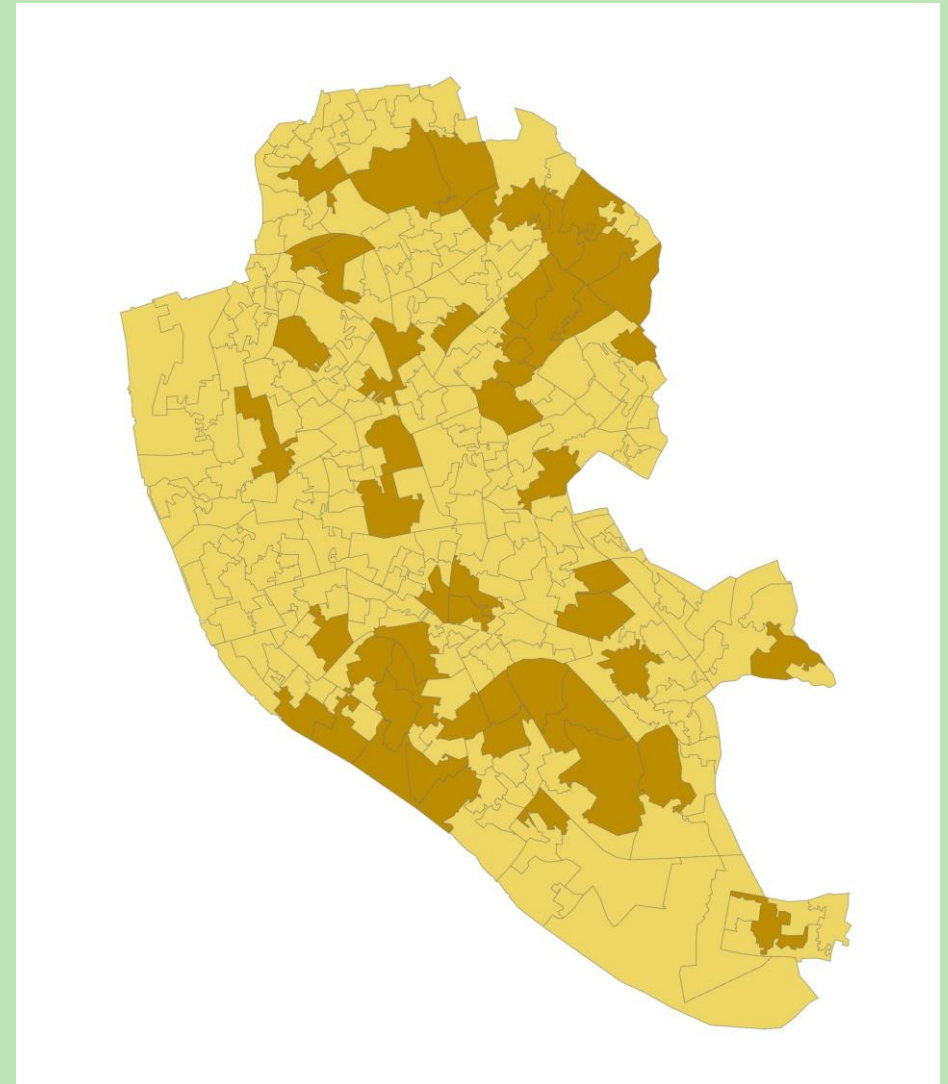
## Lessons Learnt

- » Project Manager needs to be identified at the beginning of the process
- » Cross Directorate working groups need to be identified
- » Legal Resource
- » Timescales
- » Communication / Engagement
- » Internal processes



## Why Liverpool?

- » Liverpool's green space provision is below the minimum benchmark standard as calculated by the Green Space Index
- » Liverpoolians face significant health inequalities with life expectancy for both men and women in decline
- » 1 in 6 people in Liverpool don't have access to a private garden
- » Population is expected to grow by 10% in the next 20 years putting more pressure on existing green space



### GSI Score

- Less than minimum standard
- Greater than minimum standard

## How we work with local authorities

We have reviewed our way of working in recent months and are rolling out a new approach for:

- » Partnering with landowners on multiple protection programmes
- » How we sustain our work for long-term stewardship

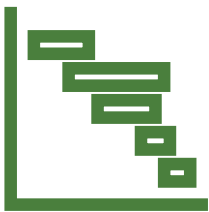
Partnership agreement



Comms and fundraising plan



Programme management



Data and analysis offer

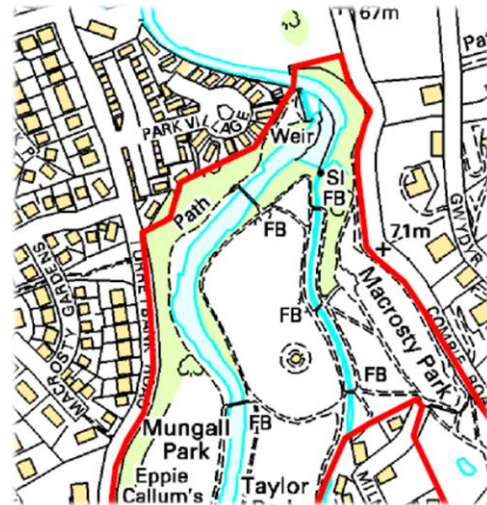


## Our Deed of Dedication\*

A legal document that protects the green space forever:

- » Land is still owned and managed by the landowner
- » Changes/improvements to the land are possible through a Field Change Request
- » Flexible for event delivery and climate mitigation plans etc
- » Usually one Deed for one green space

\*Minute of Agreement in Scotland



## The protection process

- » Map spaces and agree best fit for landowner objectives
- » Sign a partnership agreement for multiple protections
- » Project teams and legal teams work together to:
  - » Submit applications for each space
  - » Account for future plans or changes
  - » Provide land registry documents/titles etc
- » Accurate maps on ArcGIS built
- » Deeds signed and sealed by both parties
- » Protection registered with Land Registry



## Stewardship and legacy

The very act of protecting green spaces is a demonstration of their value to people and the planet, for today and for the future.

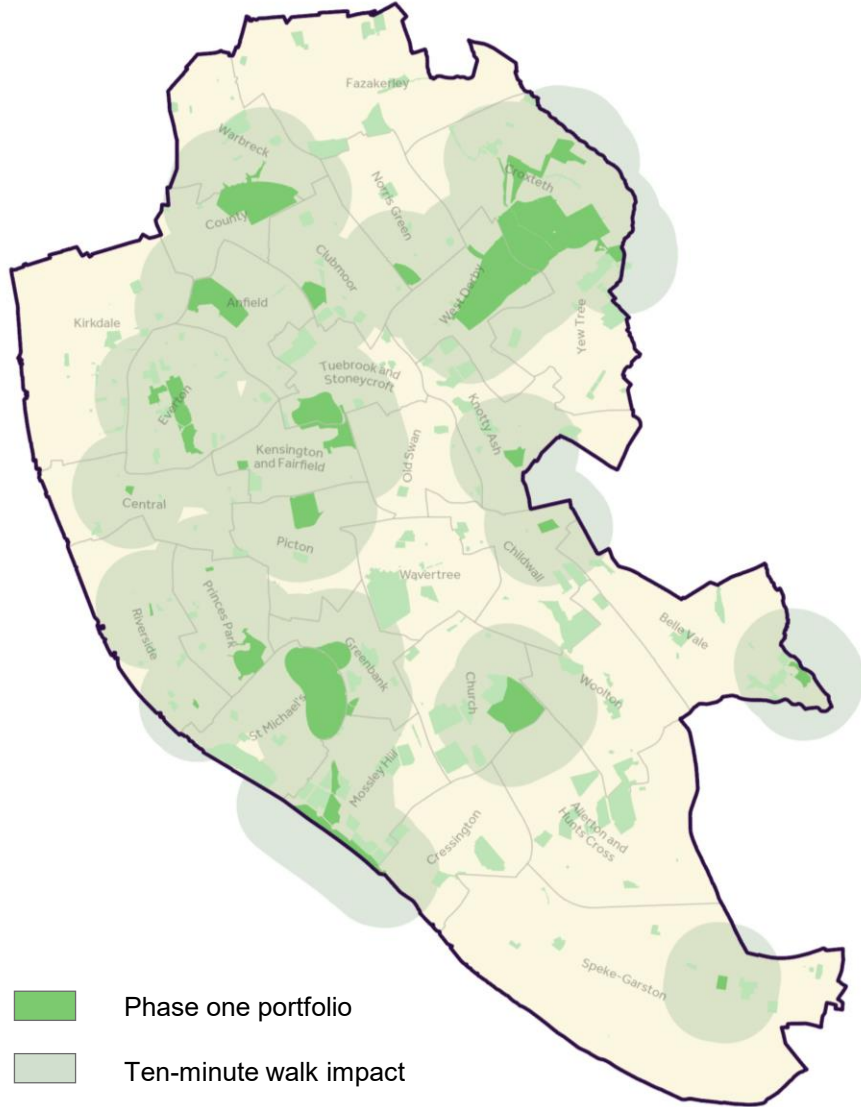
Fields in Trust provides a stewardship service to all landowners that have protected with us, supporting change requests for:

- » Leases, easements, wayleaves
- » Changes and adaptations to the space and buildings
  - » Ancillary/non-ancillary
- » Events and festival planning
- » Land transfers
- » Ad hoc advice and guidance

We know that green spaces need to adapt to local, national and global demands – this means they continue to work hard for their community



# Phase 1 portfolio



## Phase 1a Acute Strategic Need

- Falkner Square Gardens (Princes Park)
- Gore Street (Riverside)
- Norris Green Park (Norris Green)
- Parkhill Public Open Space (Riverside)
- Phythian Park (Kensington & Fairfield)
- St Johns Gardens (Central)
- Stapleton Avenue Public Open Space (Speke-Garston)
- Thomas Lane Playing Fields (Knotty Ash)
- Walton Clubmoor Recreation Ground (Clubmoor)
- Woodlands Park (Belle Vale)

## Phase 1b Major City Parks (10)

- Calderstones Park (Church)
- Croxteth Hall & Country Park (Croxteth & West Derby)
- Everton Park (Everton)
- Newsham Park (Tuebrook & Stoneycroft)
- Otterspool Park (Mossley Hill)
- Princes Park (Princes Park)
- Sefton Park (St Michael's)
- Stanley Park (Anfield)
- Walton Hall Park (County)
- Wavertree Park (Picton)



# Thank you



**Tamsin Fudge**

[Tamsin.Fudge@fieldsintrust.org](mailto:Tamsin.Fudge@fieldsintrust.org)

**Helena Cunningham**

[helena.cunningham@liverpool.gov.uk](mailto:helena.cunningham@liverpool.gov.uk)



**Liverpool  
City Council**