

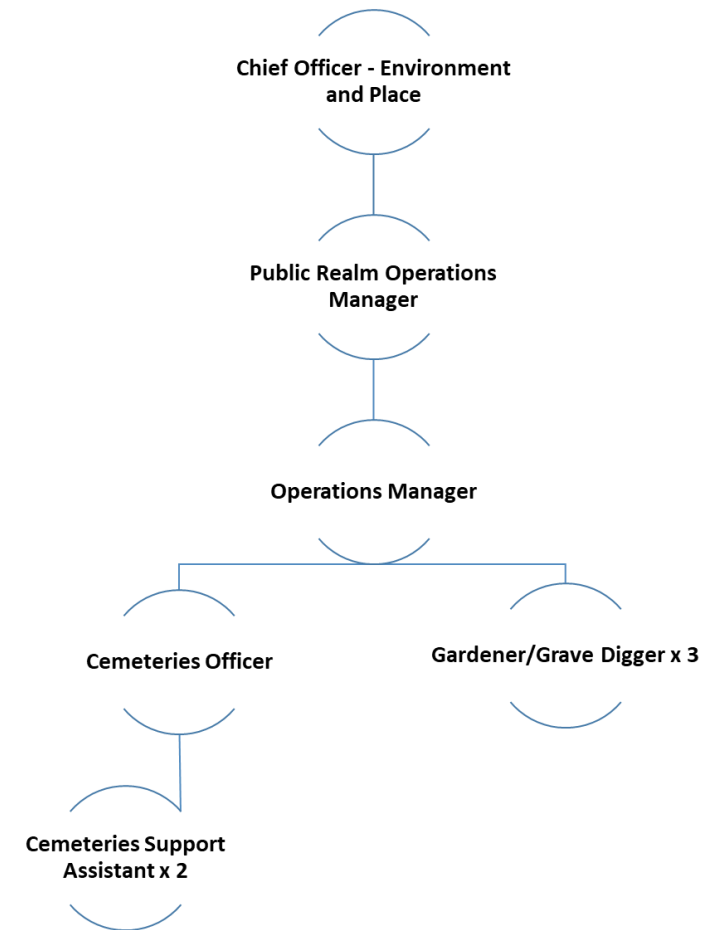
The 7 Cemeteries at Lancaster City Council

Background and context

- Lancaster City Council manage 7 cemeteries across our district: Lancaster, Morecambe, Carnforth, Hale Carr, Scotforth, Skerton and Torrisholme
- We do not operate a crematorium
- Our diary is continually full – 353 interments across all sites in 2023
- 3 of our sites are now closed for new grave plots, but all remain working cemeteries
- Interment options: traditional & lawn graves, Gardens of Remembrance, ashes scattering areas, Neptune baby and children memorial garden, woodland burial areas, and areas dedicated to Muslim faith burials.

How the service is managed

- Staff: 1 x Operations Manager, 3 x Grave digger/Gardeners, 1 x Cemeteries Officer, and 2 x Cemeteries Support Assistants
- Our office reports to Public Realm Operations Manager, the Chief Officer of Environment and Place, then the Chief Executive.
- Our Operations Manager has a split role which straddles the City Council's Grounds Maintenance service.
- Office based at Morecambe Town Hall, not on site. Our operations crew are based at the city council depot, but can be working within any of our 7 sites throughout the day.

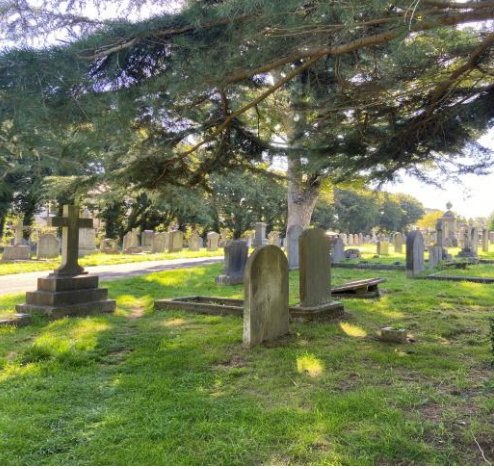




Lancaster Cemetery

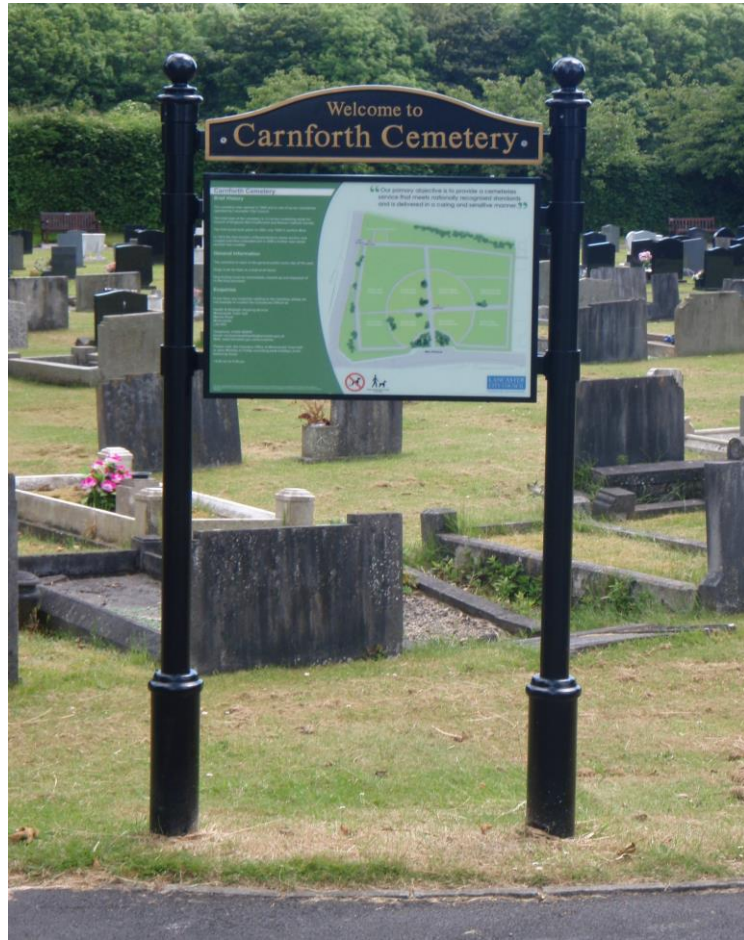


- Opened in 1855, built on a disused quarry
- Remains a working cemetery but no new graves
- Approximately 18 acres
- Grade II listed
- Chapel buildings – 3
- Friends of Lancaster Cemetery
- Graves of significance
- Rich wildlife



Morecambe Cemetery

- Opened in 1874
- Remains a working cemetery but no new graves
- Approximately 2 acres
- Local fishing community of Poulton
- Carved statue



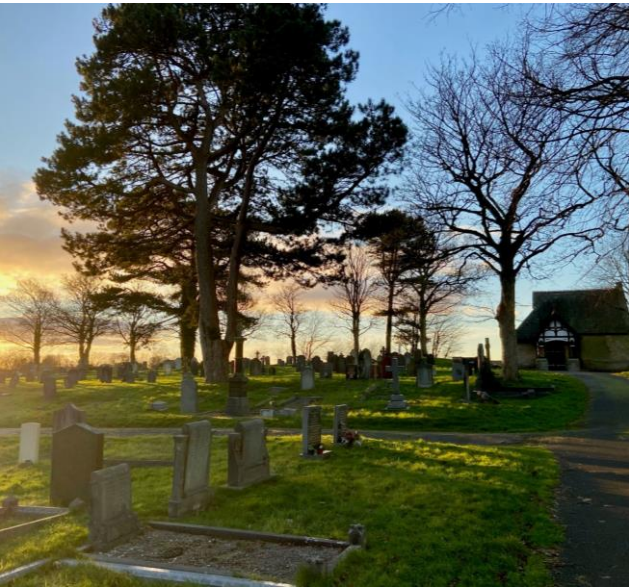
Carnforth Cemetery

- Opened in 1925
- Approximately 3 acres
- Gardens of Remembrance – 3
- Located close to the popular tourist spot of Carnforth Railway Station featured in the 1945 film Brief Encounter



Hale Carr Cemetery

- Opened in 1926
- Approximately 6 acres
- Garden of Remembrance
- Woodland Burial Area
- Chapel



Scotforth Cemetery

- Opened in 1891
- Approximately 11 acres
- Gardens of Remembrance - 2
- Chapel
- Muslim/Islamic faith burials
- Polish section
- Raft graves



Skerton Cemetery

- Opened in 1904
- Approximately 6 acres
- Garden of Remembrance
- Chapel
- Steep incline



Torrisholme Cemetery

- Opened in 1906
- Approximately 14 acres
- Gardens of Remembrance - 3
- Chapel
- Green Flag Award winning
- Wildflower Meadow
- Neptune baby and children memorial garden



Looking to the future

Objectives: Improve the cemeteries service to exceed the needs of the bereaved, Protect and enhance the environment for future generations, Raise the Cemetery profile, Assist in the reduction and elimination of Funeral Poverty

Recording feedback

Benchmarking

Friends Groups

Utilising chapel buildings

Designing and creating new interment and memorial areas