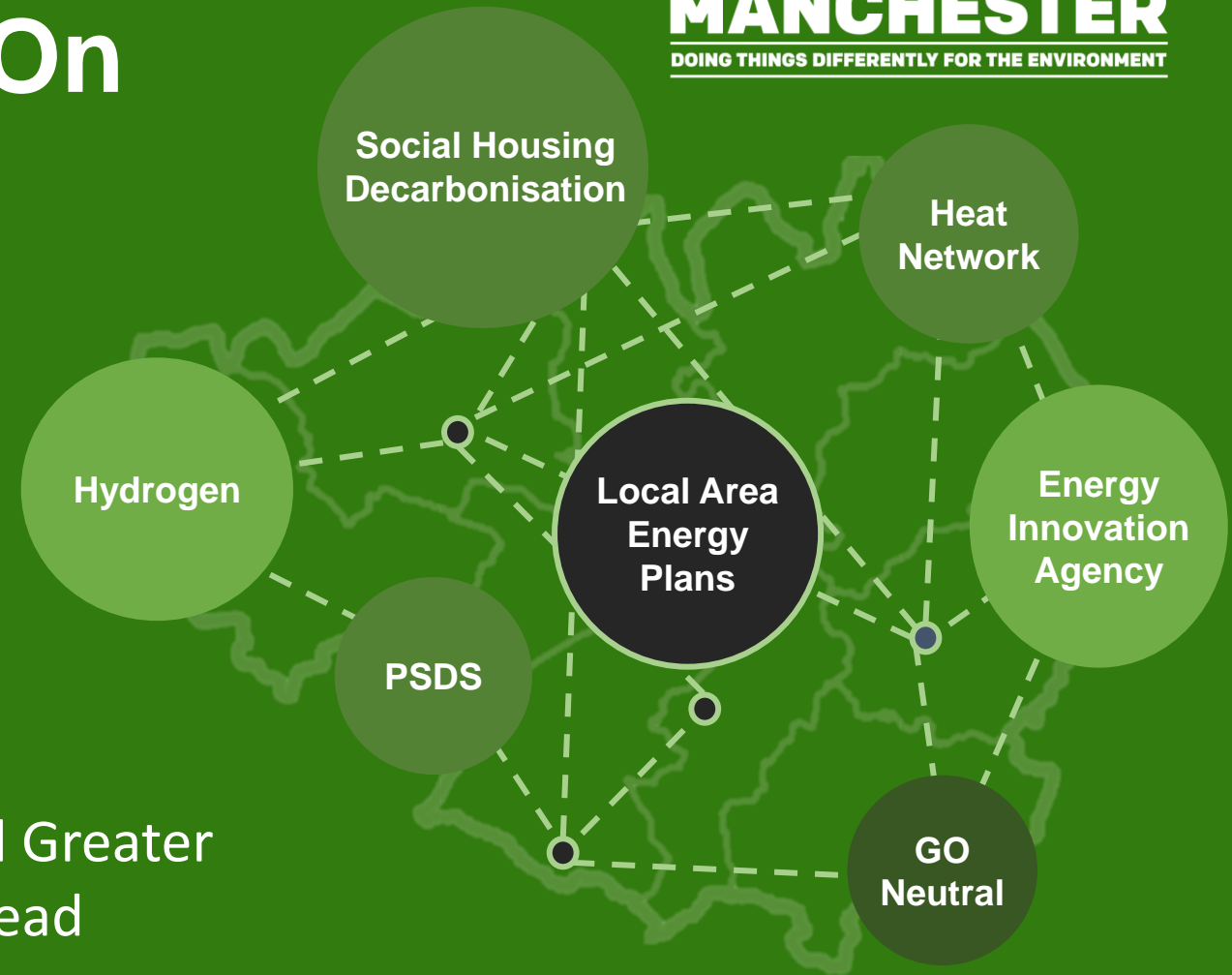


Monitoring Progress On Climate Change

Delivering Net Zero in Greater Manchester

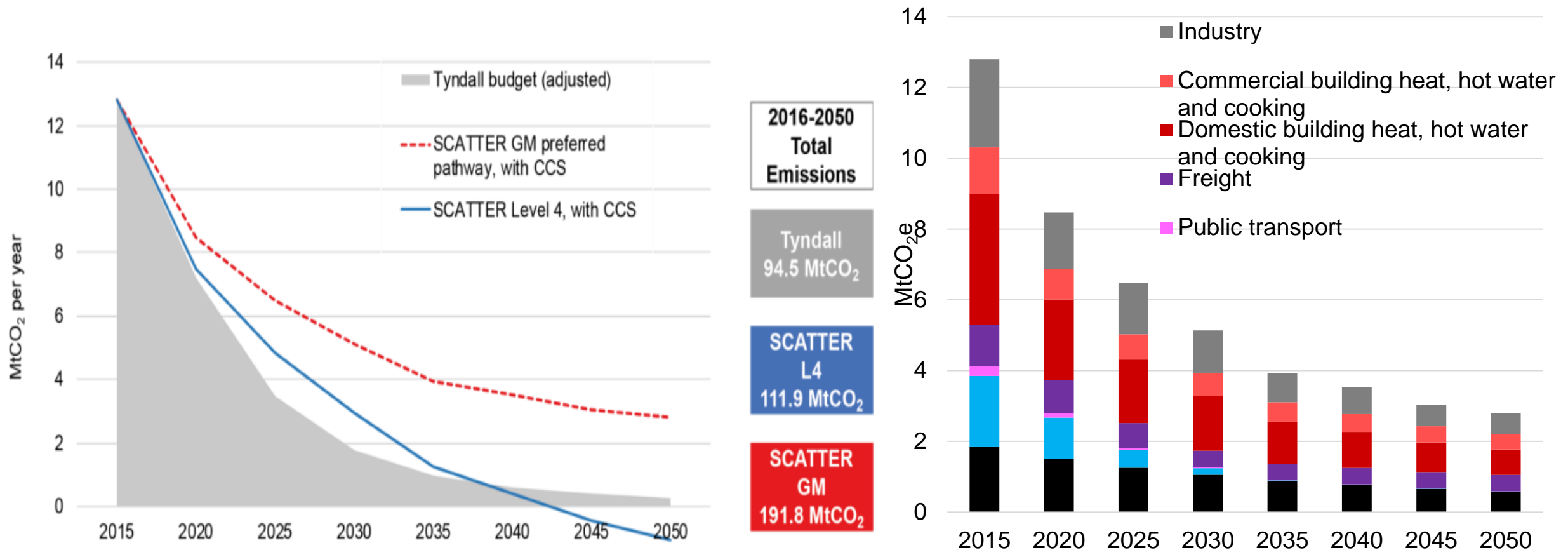
Cllr Tom Ross, Leader Trafford Council and Greater Manchester Green City Region Portfolio Lead

GREATER MANCHESTER
DOING THINGS DIFFERENTLY FOR THE ENVIRONMENT

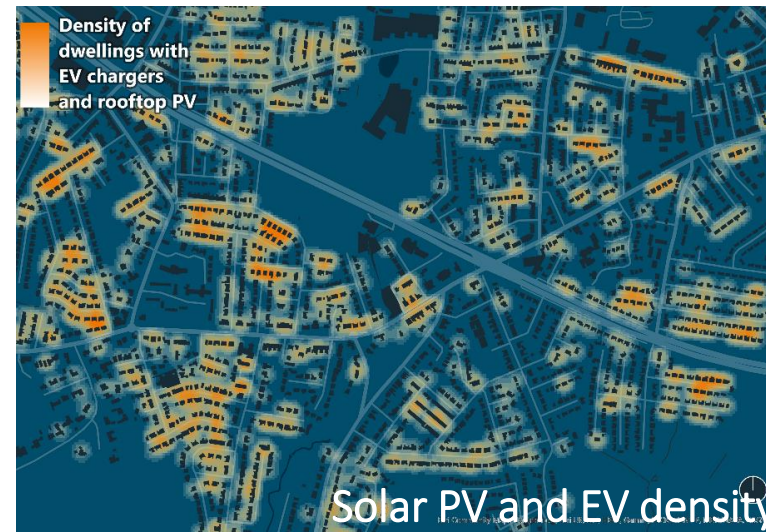
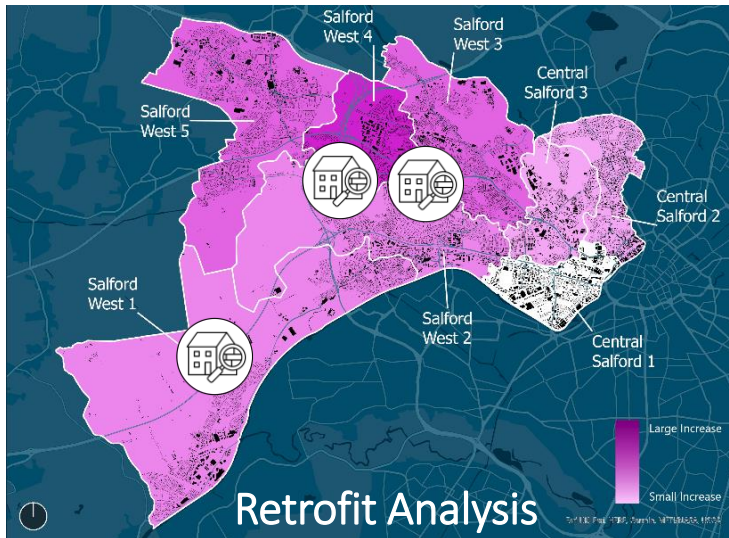
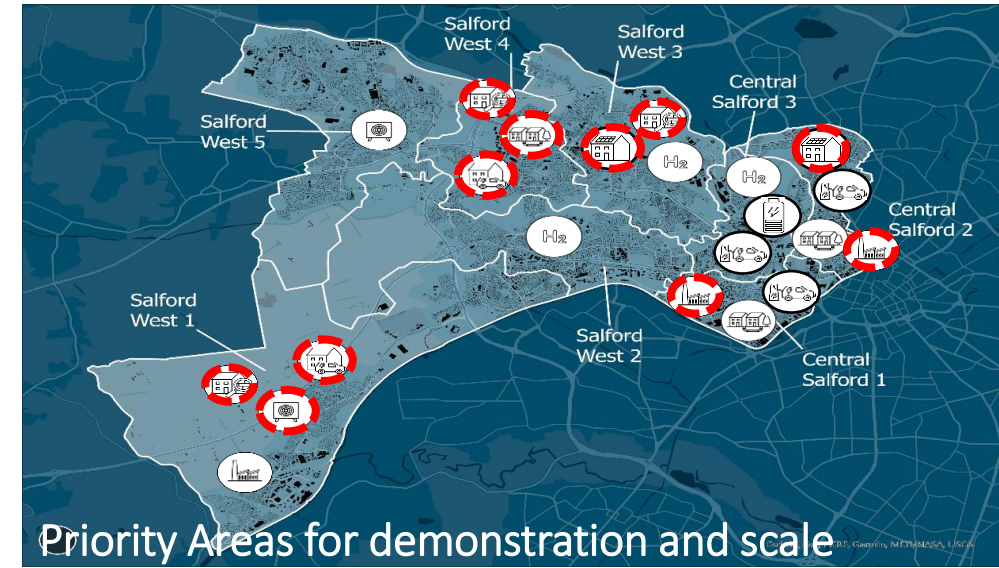
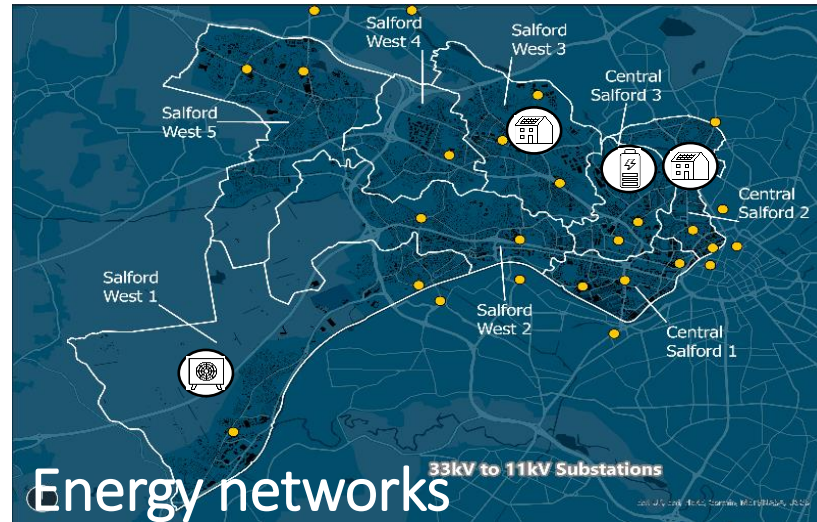


Where we started – SCATTER

(Setting City Area Targets & Trajectories for Emissions Reductions)

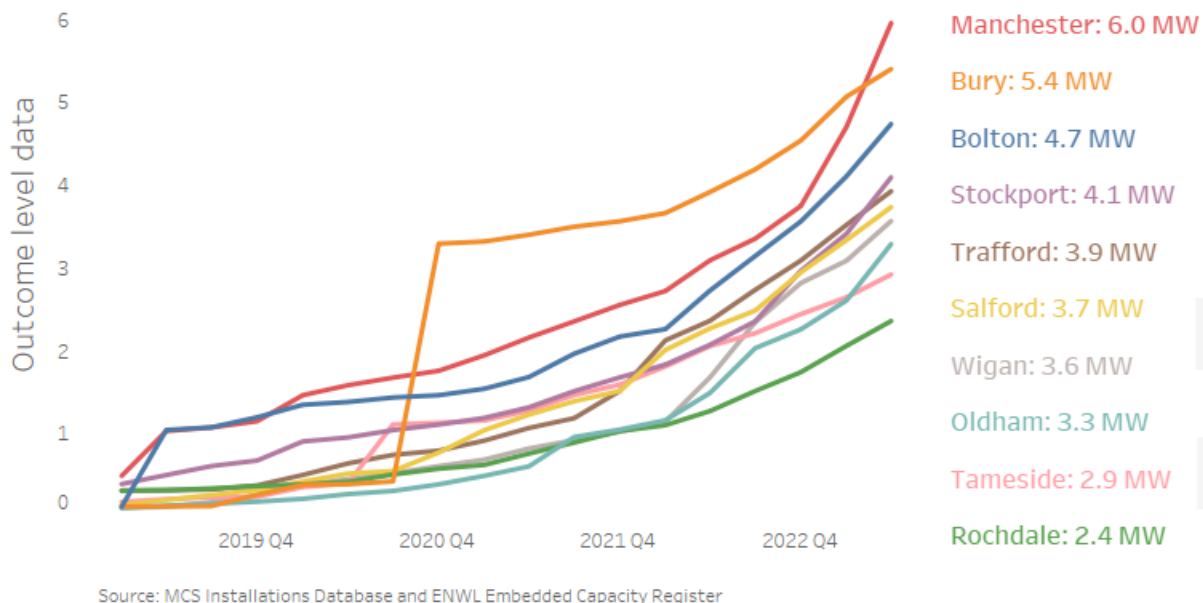


Developing Local Area Energy Plans

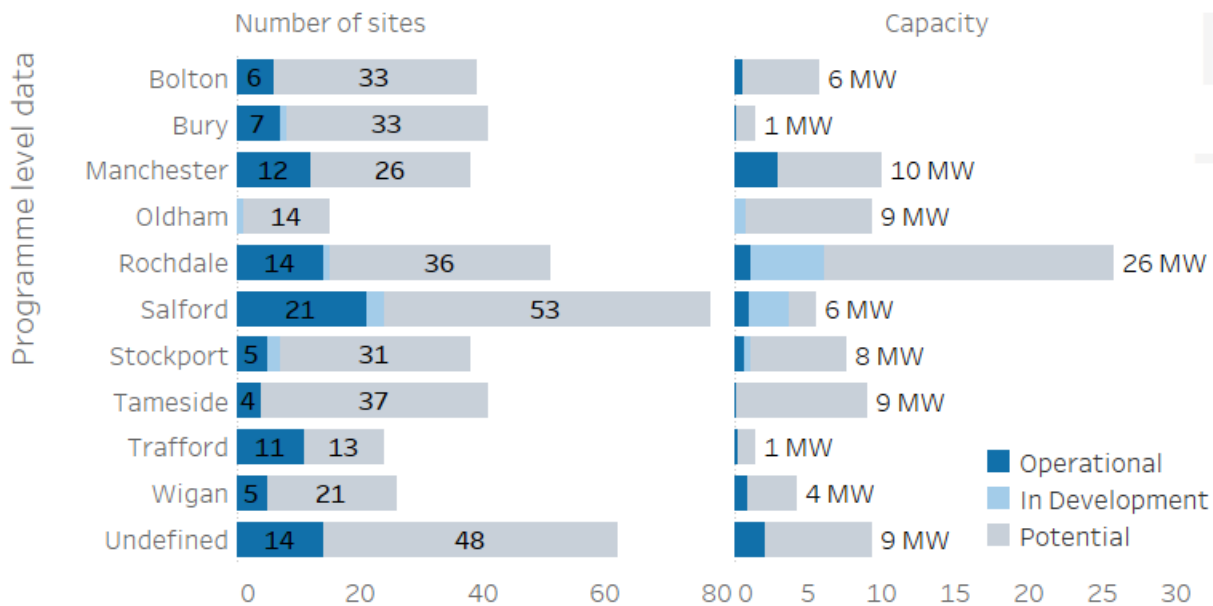


Delivering carbon reduction in GM

MWs of Renewable Energy Capacity added since 2019



Go Neutral: Renewables



Total Renewable Energy Capacity

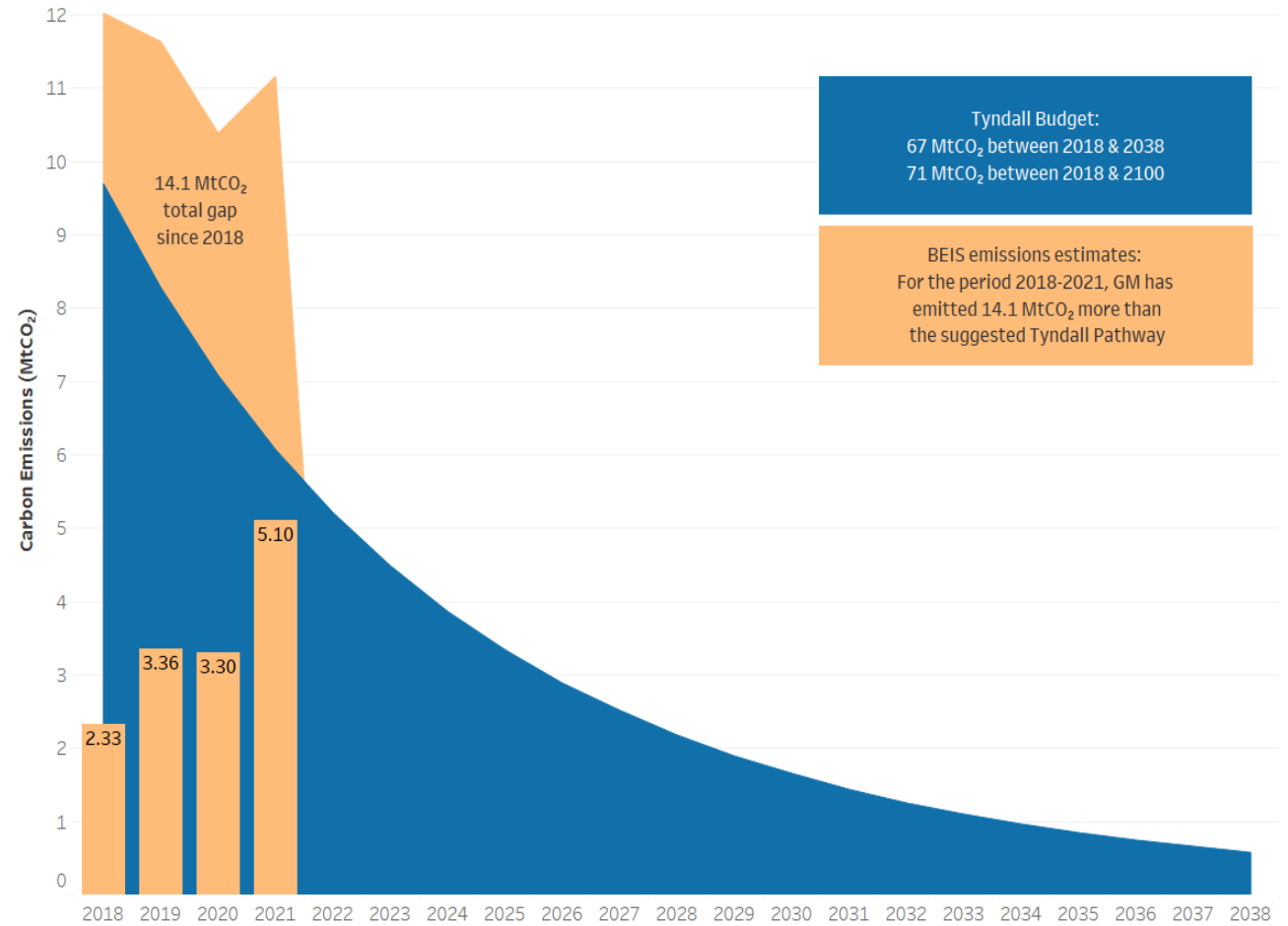
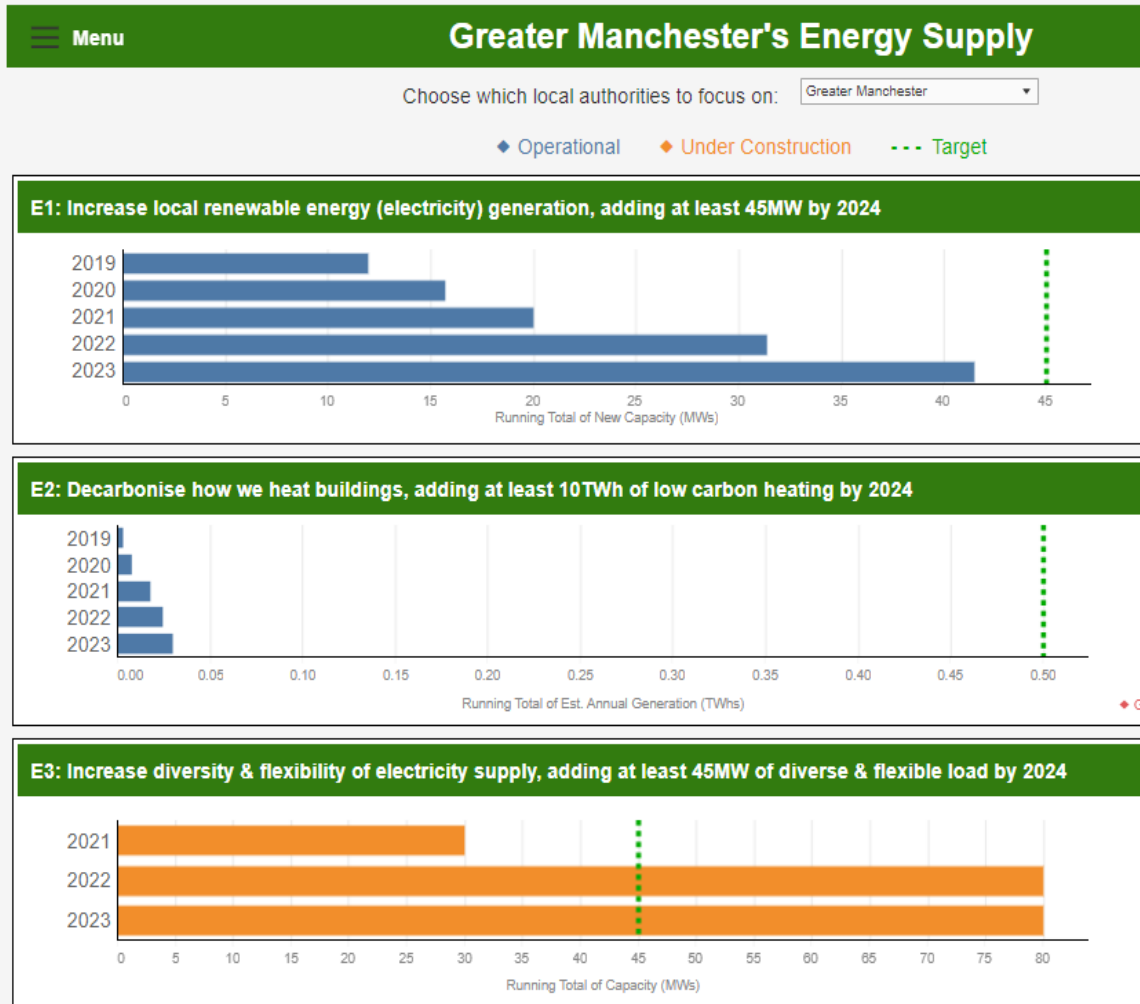
Data based on:

- all new domestic and non-domestic solar recorded by MCS (roughly 90% of <50KW installations registered with MCS)
 - all new grid connections >50kw as recorded in ENWL's Embedded Capacity Register
- Note the difference one large connection in Q4 of 2020 makes to Bury's total capacity added (2.8MW connected at United Utilities site).
 - New capacity added accelerated since start of 2022, driven primarily by increased uptake in small domestic solar installations (MCS).
 - change in trend most notable for Wigan (e.g. 1MW added in first 12 quarters 2019-2021, 2.5MW added in 6 quarters since) and Oldham
 - Change in Q2 2023: Manchester saw strong small-scale solar growth in most recent quarter (MCS) Added 1.1MW in single quarter. Oldham, Stockport, Bolton all > 0.5MW

Go Neutral Programme Data

- GMCA-led programme to identify, develop, and deliver a pipeline of Smart Energy opportunities via a range of investment and delivery models. Chart shows progress amongst sites submitted to the programme.
- Across all of GM, 24% of opportunities identified are now operational. In total, 9.4 MWs of solar capacity from Go Neutral is operational so far.
- Sites "In Development" may be in procurement, development/planning or construction.
- "Potential" sites includes sites pre-feasibility or undergoing feasibility assessments, and those on hold – may not be feasible, but could see massive potential impact if they are
- Undefined category includes GMP, GMFRS, NHS and TfGM sites where location has not yet been updated in the data.

Monitoring Progress Against Targets



Data sources: MCS Installations Database, REPD, ENWL ECR, National Statistics - click on the @ buttons for more info

[Five Year Environment Plan \(2019-24\) progress: KPIs v Targets - Tableau Server \(gmtableau.nhs.uk\)](#)

[Five Year Environment Plan \(2019-24\) progress: Actual v Budget](#)

**GREATER
MANCHESTER**
DOING THINGS DIFFERENTLY

@GM GreenCity | #GMGreenCity