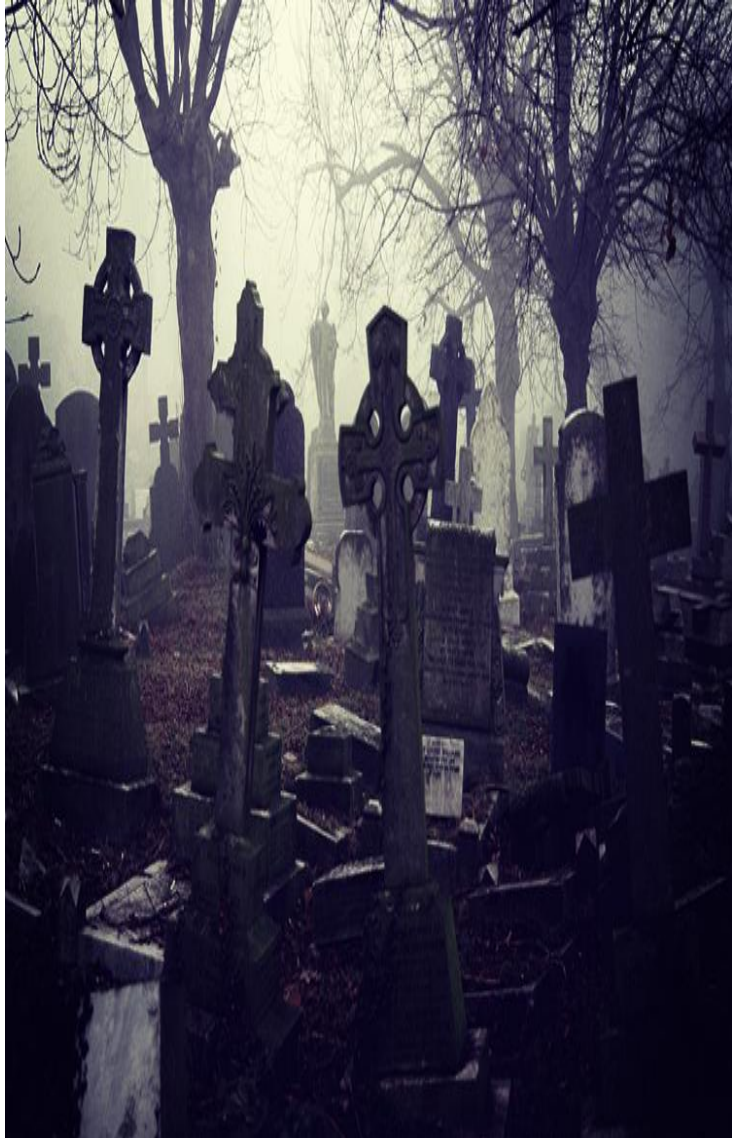


How do we view our cemeteries in today's society?



the
Poppy
Pantry



Why are cemeteries important?

'Taphophilia' – a love of cemeteries

Cemeteries can reveal information about historic events, religions, lifestyles, and genealogy. They're full of history, they're full of beautiful artwork ... they seen by many as **outdoor museums**. You can learn so much about your community by visiting a cemetery.

Cemeteries have a deep historical connection to the local community. They bring residents closer to an understanding of the past and help to provide insights into how people within the area used to live.

We can gain information on the importance of individuals to the community at the time and the jobs and social connections they had during their lives.

Cemeteries can also hold deep significance for families with loved ones buried in the area.

Cemeteries are becoming destinations for photographers, for walkers and runners, for genealogists and historians

Cemeteries were the first parks.



Community Engagement



- Friends of Cemeteries are now becoming an increasingly important resource in the maintenance and future management of cemeteries.
- The National Federation of Cemetery Friends
- Roles include: clearing and maintaining areas, working with local ecology groups to maintain a balance between wildlife and heritage, provide guided walks, run open days and special events, work on projects with English Heritage and other organisations.
- Attract funding unavailable to local authorities
- Some groups have restored memorials and chapels and even support some of the funeral services



Income generation

- Burial and cremation charges.
- Memorialisation
- Commercial activities
- Cafes
- Flower shops
- Utilising unused cemetery land to develop burial vaults, sarcophagi and mausoleum plots.
- Woodland burials
- Letting-out vacant cemetery buildings
- Introduction of pet cemetery
- Using the ceremony rooms for other things other than funerals



Genealogy Studies



- Growing area of national interest with many local authorities now providing chargeable services.
- Many now provide dedicated resources to allow public to search burials and cremation records.
- Software now developed to allow individual graves to be recorded and listed.
- Friends groups useful resource in helping provide service.
- Chargeable history tours and events.
- Opportunities to sell merchandise.

Can cemeteries be wildlife reserves?



Southern Cemetery Manchester - The Meadow, an area of Southern Cemetery that is being managed to encourage native wildlife, plants and wild flowers. A small plaque with a grave number is placed to identify the grave location, but no memorialisation is allowed on the graves.



Nunhead Cemetery, London, Now managed as a nature reserve with limited formal areas. Neglect led to it being overgrown. Friends Group are now managing the cemetery to promote nature.



Arnos Vale Cemetery, Bristol makes a conscious effort to provide a home for nature now a Site of Nature Conservation Interest. Grounds maintenance planned to allow wildflowers and grasses to thrive and promote wildlife such as owls, bats, foxes and badgers and a wide variety of birdlife and insects across the 45 acre site.





A CASE STUDY IN COMMUNITY ENGAGEMENT

Liverpool City Council

Alan Sheldon -Senior

Cemeteries and Crematoria

Officer

Inspirational Anfield

Valuing, Developing & Celebrating our
Cultural Heritage



Friends of Anfield

Community Engagement Report 2017

Contents

Introduction	4
Northern Soul	7
Questionnaire	10
Engagement Events	20
Social Media	23
Credits	25

Introduction

Background

Friends of Anfield (FoA) is a *Charitable Incorporated Organisation (CIO)* with the stated aims of removing Anfield's Grade II* cemetery from Historic England's *At Risk Register*; developing a sustainable *Conservation Management Plan* for its future; and to establish an International Heritage and Visitor Centre in the derelict South Chapel.

The **Heritage Lotter Fund (HLF)** have granted us *Start-up* funding to explore the viability of these ideas and to help scaffold **FoA** in this first stage of the initiative.

An important aspect of this *Start-up* work is engagement with stakeholders, local communities and visitors. This report documents our work on these engagements over the past year, set out as a series of actions:

- **Stakeholder Meetings**
- **Northern Soul Event**
- **Questionnaire**
- **Engagement Events**
- **Social Media Development**

Stakeholder Meetings

Regular Friends Meetings — are held monthly in an office provided free by the Co-op Funeral Care in Anfield. The meetings are advertised on our web site and Facebook, and are open to all members of the public to attend. We have run some training sessions in these meetings to help build capacity in the community. All are well attended by Trustees, members of neighbouring Stanley Park Friends and other cemetery Trusts on Merseyside, Local Councillors and built environment professionals. This has enabled us to share knowledge, experience and expertise.

'Interested Parties' Meetings — are held quarterly at **Liverpool City Councils (LCC)** offices. Attendees include **FoA** Trustees, **Historic England (HE)** and senior officers from **LCC**. The meeting receives progress reports from each organisation, provides an opportunity to discuss development plans and agree actions for the following quarter.

Formal Presentations — outlining our aims, activities and the support we have received, have been made to the *Anfield Stakeholders Group* who oversee the £260m regeneration programme for the area. Stakeholders include local community representatives, **LCC's** Deputy Mayor and Deputy Director of Development, Local Councillors, a Director of Liverpool Football Club, and representatives from Your Housing Group.

Ad-hoc Meetings — have taken place over the year where Trustees have sought opportunities to meet with other individuals and groups to discuss our project in Anfield, and to hear about the work of others. These include discussions at the Anglican Cathedral, with the Hillsborough Families Support Group and Friends of Walton Park which is close by.

We have met with academics and students from Liverpool University and John Moores University to establish future projects in the cemetery. In addition, we have contacted Positive Futures, a charity which builds young people's confidence by getting them involved in local activities. This led to a second HLF proposal - 'Lifting the Lids' - which will encourage young people to research Anfield's heritage and display the outcomes on 12 Heritage Boards sited around the cemetery.

Trustees have been asked by **HE** to attend events around the country to showcase our project and our approach to working with this heritage asset.

We are also building our engagement with groups with special interest in the cemetery, including the *See Yep UK Association* (representing the Chinese community), and a range of interests in sports, music, arts etc.

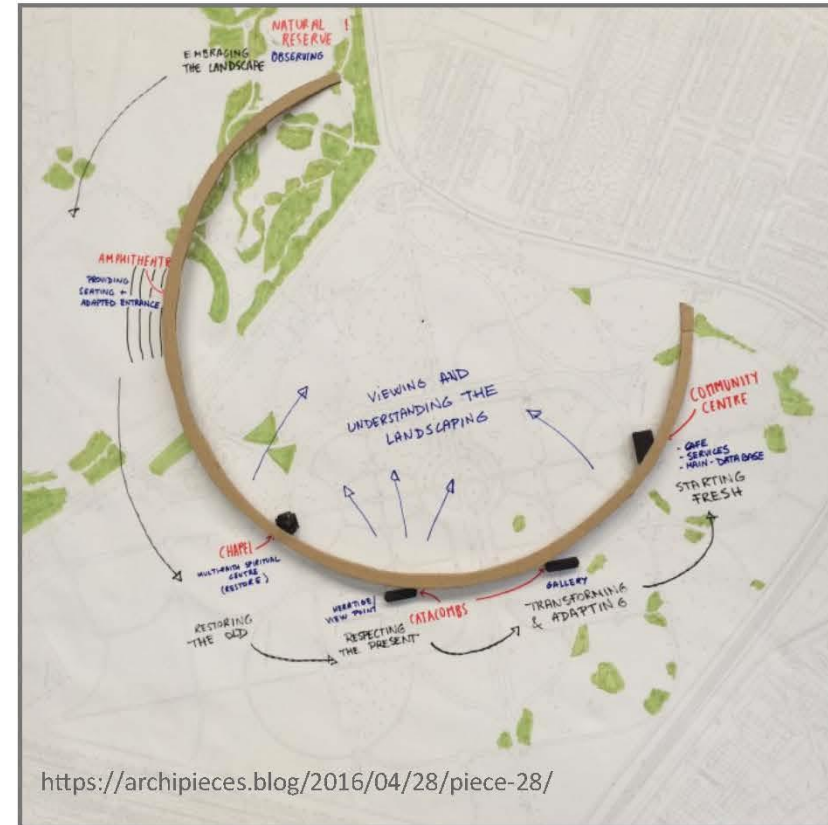
Northern Soul

RIBA + Northern Architectural Schools

Supported by the Royal Institute of British Architects (RIBA), the **Northern Soul** event brings ten Northern university Schools of Architecture together for a one day design charrette each year. Taking turns to host this annual event, in 2016 Liverpool John Moores University and the University of Liverpool ran a joint event focussed on Anfield Cemetery.

Approximately 70 students attended the event, and worked in small mixed teams from across the universities. Working to an open brief, the students were free to focus on the South Chapel alone, other aspects of the cemetery or the cemetery in the wider urban context. FoE Trustees helped draw up the brief, attended the morning session in the cemetery and joined the students again in the afternoon in a city centre venue where they developed designs and strategies for their chosen element.

Opposite is an extract from a write-up by one of the student teams. Over the next few pages are images from the event.

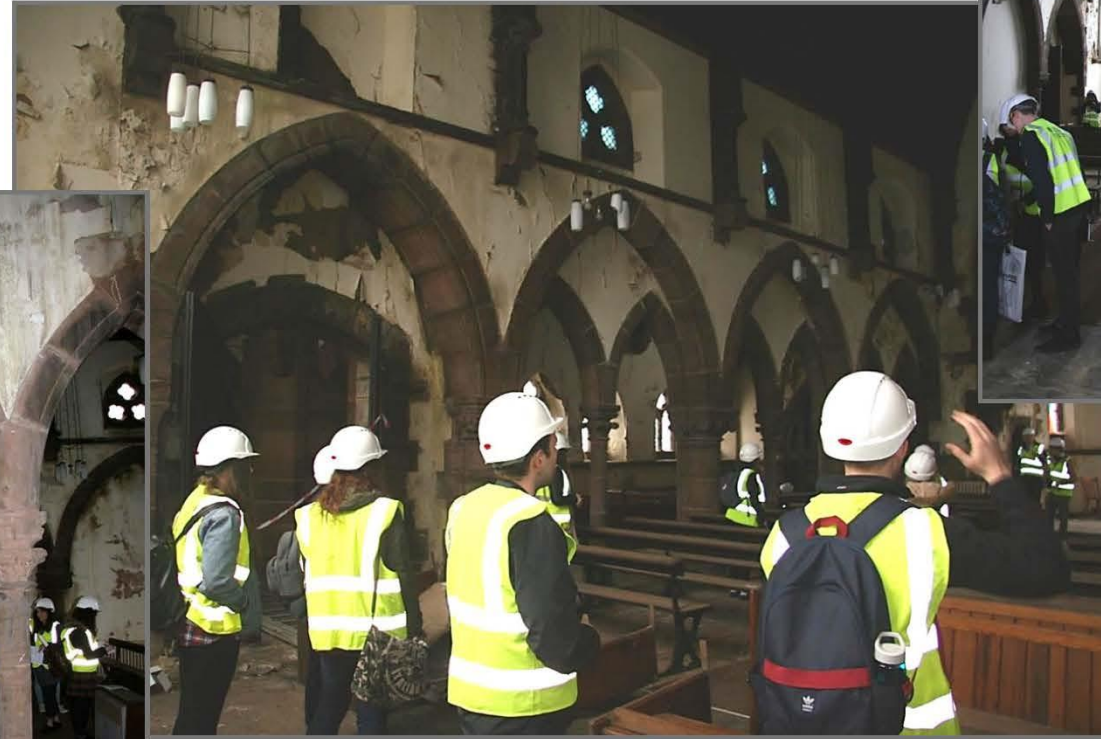
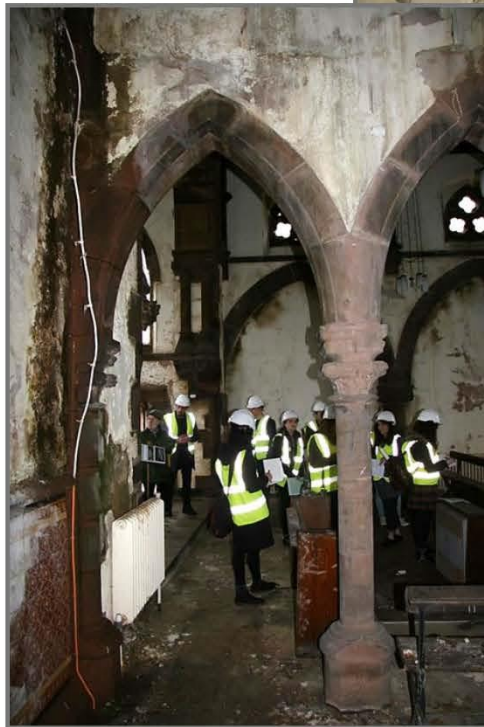


“...we proposed a elevated circular walkway that would start at the entrance of Stanley Park and end at the clock entrance of the cemetery with the possibility of getting off the route at various points of interest, such as the chapel, the catacombs and a new community centre that would also be the main database for the ancestry.

The walkway was inspired by the symbolism of the circle, which appears in multiple cultures and suggests totality, wholeness, original perfection, the Self, the infinite, eternity, timelessness, all cyclic movement and divinity. It also can relate to the circle of life, starting off in the nature, passing the grounds where children and parents and children are playing, crossing the main road (crossing a road is also a symbol of moving into a different realm) and reaching the chapel where spirituality comes in play....”

Northern Soul

Students Survey the Chapel...



Northern Soul

Getting to Work...



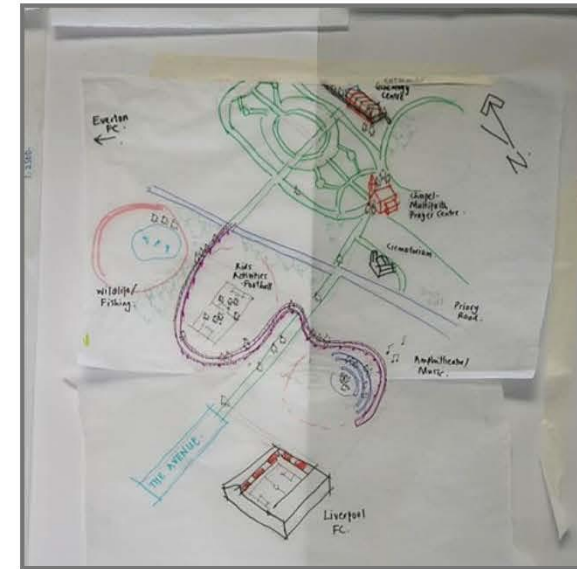
Northern Soul

Getting to Work...



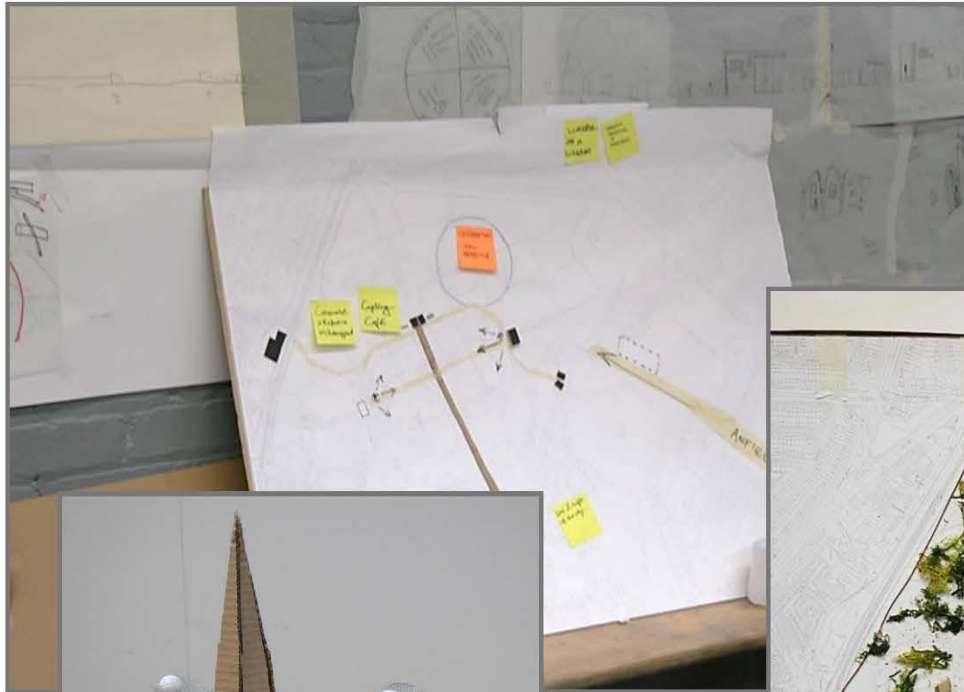
Northern Soul

Fresh Ideas...



Northern Soul

Fresh Ideas...



Questionnaire

Survey

As part of the **Heritage Lottery Fund Start-up Grant**, we prepared the following survey and distributed it via:

- Our web site
- Our Facebook Page and Facebook Group
- Other organisations Facebook Groups
- Survey Monkey – link also in an Anfield newsletter delivered to 8,000 households.
- Hard copies face to face with residents.

People were asked to rank their responses from 1 to 5 - 1 being not at all, 5 being frequently.

There was an opportunity for respondents to write personal comments, indicate their age and interest (resident, business etc), indicate if they were interested in joining Friends and/ or volunteering, and if they would leave us their contact details.

Respondent—please circle or indicate 'other':					
resident	visitor	funeral director	clergy	worker	business
Age: under 18 18-30 30-45 45-65 over 65					
Interested in joining Friends/ volunteering? No / Yes (contact details below)					
Name:	(optional)				
Email:					
Address:					
Additional Comments:					

Notes

STORY OF FRIENDS: We are a community group working to get the Cemetery off the Heritage At Risk Register and bring the remaining chapel and classrooms back into public use. We are a Charitable Incorporated Organisation.

AIM OF SURVEY: To gather information that will help inform our plans for the cemetery generally and for the proposed chapel specifically.

PRIVACY: You do not need to answer any questions you feel uncomfortable with. We will not share your information or identify your responses without your permission.

THANK YOU FOR PARTICIPATING IN OUR SURVEY: If you would like to join us or want more information please insert your contact details above or look on our web site www.friendsofanfield.com

Friends of Anfield



Anfield Cemetery Community Engagement Survey

Buried in our soil, we have some of the most exciting stories in modern world history. We want to rediscover all these stories and celebrate the rich cultural heritage within our own neighbourhoods.

We also want to celebrate the ordinary stories of local people and to make it a pleasure and safe place to visit and walk through. In particular, we are interested in developing an international 'visitor' centre in the chapel with additional facilities such as a cafe, meeting place and venue for funeral receptions.

We have successfully bid for start-up and ongoing funding from the Heritage Lottery Fund and the Architecture Heritage Fund to get the ball rolling. An important part of this early work is engagement with local residents, community groups, visitors, service providers and other stakeholders to gain your support and input on the future of the Cemetery.

This will help the Friends develop plans that meet the needs of the local people and provide an opportunity for everybody to get involved in celebrating our national heritage.

Friends of Anfield | Charity Number 1161476 | www.friendsofanfield.com

Anfield Neighbourhood

Overall:

1. How much do you consider the cemetery an important part of your neighbourhood?
2. How much is the cemetery used as a community space?
3. How important is this greenspace to you?
4. Do you think improvements to the cemetery will benefit local communities? (Eg restoration, lighting, seating etc)

Anfield Cemetery

5. Over the past 12 months, how often have you been to the cemetery?
6. How easy is it to find your way around?
7. Are happy are you with the design and maintenance of the cemetery?
8. How safe do you feel in the cemetery?

Funerals & Cremations

9. How satisfied are you with the funeral facilities here?
10. Is there a need for funeral reception facilities in the cemetery?
11. Do you think the chapel would make a convenient venue for funeral receptions?
12. About how big is the average family funeral? (question aimed at funeral directors/ clergy/ cemetery workers)

The Chapel & Other Buildings

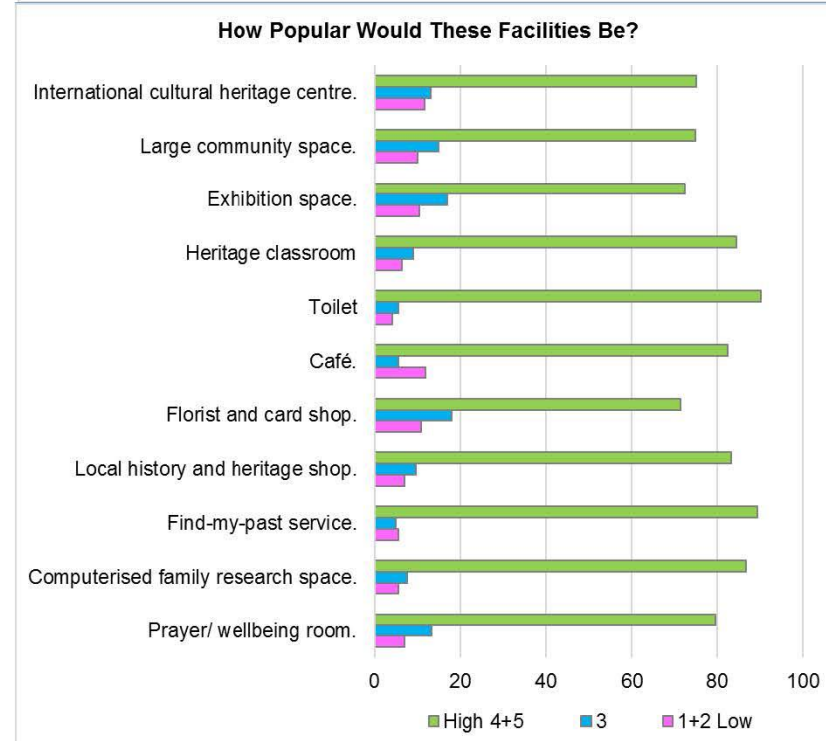
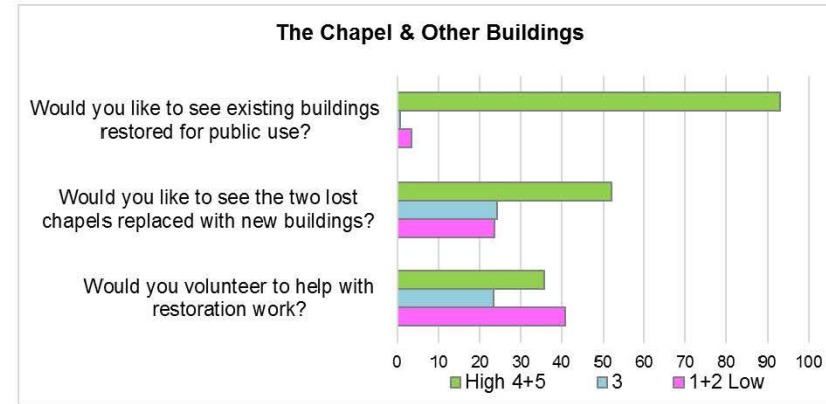
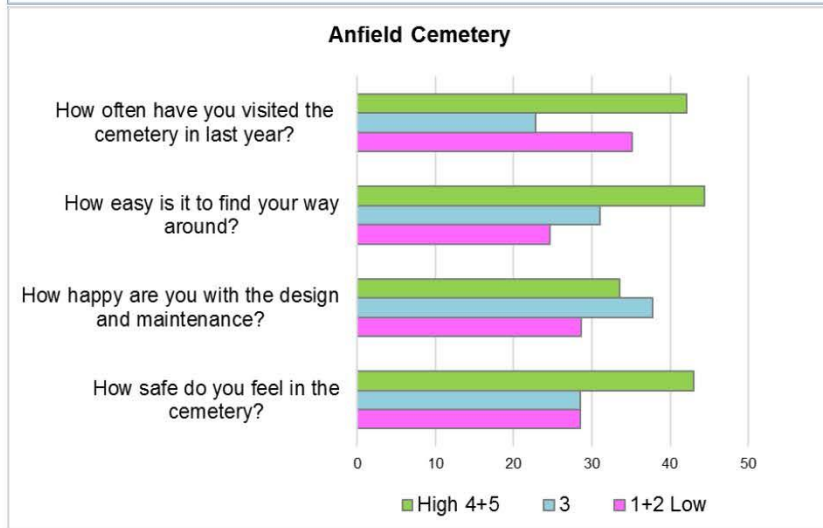
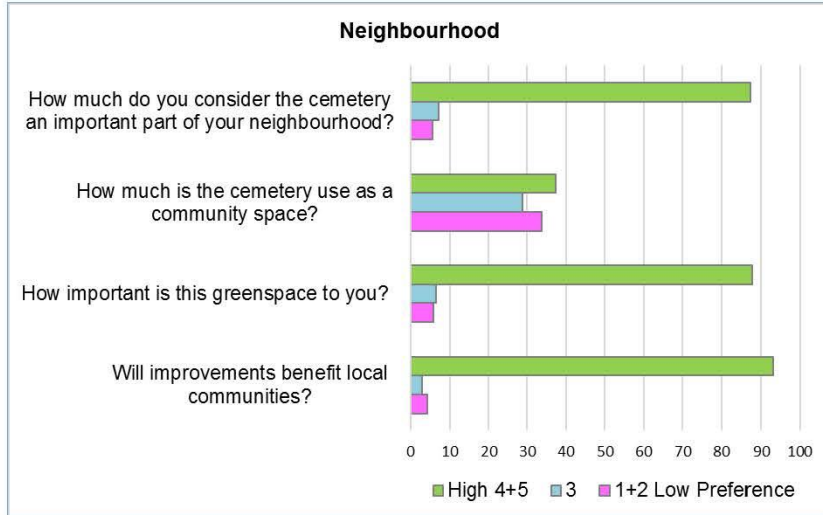
Overall:

13. How much would you like to see the buildings restored for public use?
14. Would you like to see the two lost chapels replaced with new public buildings?
15. How interested would you be in work or volunteering opportunities in the restoration of the buildings?

How popular or beneficial do you think the following facilities would be:

16. International cultural heritage centre?
17. Large community space?
18. Exhibition space?
19. 'Heritage classroom' for schools?
20. Toilet?
21. Café?
22. Florist and card shop?
23. Local history and heritage shop?
24. A 'find my past' service?
25. Computerised family research space?
26. Prayer or 'wellbeing' room?

Questionnaire



Questionnaire

Restoration

"Champion"

Research

- *"Lead research into the hCemetery ecology and nature conservation."*

International Centre

"Create an international"

Engagement Events

Big History Show, St. George's Hall 2016

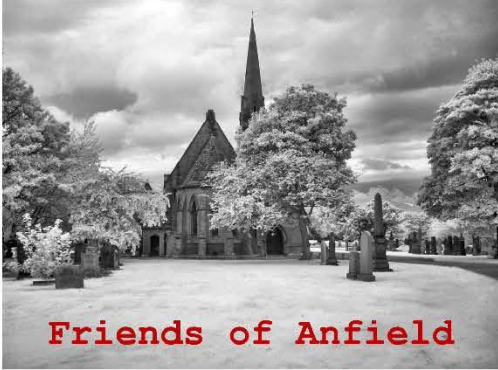


Text

Engagement Events

Engagement Meeting

As a



Friends of Anfield

**PUBLIC MEETING TO DISCUSS THE FUTURE OF
ANFIELD CEMETERY**

Friends of Anfield were awarded Heritage Lottery Start-up Funding in 2016 to support us with community engagement and participation. We have a questionnaire circulating at <https://www.surveymonkey.co.uk/r/Y6852C> which provides more information.

We are now inviting the local community and everybody else with an interest in the cemetery, its history and future, to a workshop where you can find out more about what we hope to achieve, how you can become involved and for you to put forward your own thoughts on the day.

VENUE

Saint Columba's, Pinehurst Avenue, Anfield, Liverpool, L4 2TZ

Saturday 18th March 2017 from 10:00 till 1:00

<http://friendsofanfield.com/>
<https://www.facebook.com/Friendsofanfield/>
<https://www.facebook.com/groups/534392599994970/>

Engagement Events

Event Posters

Posters were prepared for the community event illustrating the importance of Edward Kemp and his work, the heritage assets in the Anfield area, a focus on the cemetery and its social history.

We also displayed our Vision, aims and objectives on supporting posters. These remained on display in St. Columba's Community Centre for a month, will be used in display in St. Columba's Community Centre for a month, will be used in the Big History Show 2017 and will be finally displayed in Home Baked in this period of engagement.

Friends of Anfield

Anfield Cemetery Gardens & Stanley Park

The poster includes a map of Anfield and Breckfield, a map of Stanley Park, and several photographs of the Anfield Cemetery and Stanley Park. The text at the bottom of the poster reads: Liverpool City Council, Historic England, AHF, and LOTTERY FUNDED.

Friends of Anfield

Edward Kemp - Acclaimed Landscape Architect

In the 1830s he worked with Edward Milner as a garden apprentice at Chatsworth House in Derbyshire under Joseph Paxton. In August 1843 the Improvement Commissioners of Birkenhead appointed Paxton to plan and construct Birkenhead Park, the first park to have been provided in Britain at public expense. Paxton was responsible for the overall planning and design, while Kemp was involved with the day to day implementation of the plans. By the summer of 1845 Paxton's work was complete, and he recommended to the Commissioners that Kemp be retained as superintendent, and be provided with a residence.

Birkenhead Park was opened in April 1847, and in 1849 the Commissioners decided that a superintendent of parks was no longer required. Kemp agreed to work for no salary, if he could remain in his residence. He became an author and landscape gardener, his clients mainly the newly rich, but he also was consulted for the designs of parks and cemeteries. These included Playbrick Hill Cemetery in Birkenhead, Liverpool Cemetery and Stanley Park in Anfield, Grosvenor Park in Chester, Conington Park in Congleton, and Queen's Park in Crewe. Kemp died at home in Birkenhead Park in 1891, and is buried in Playbrick Cemetery.

The poster includes historical illustrations of Birkenhead Park and Grosvenor Park, a 3D model of Playbrick Hill Cemetery, and logos for Liverpool City Council, Historic England, AHF, and LOTTERY FUNDED.

Engagement Events



Social Media

Structure

As a **Charitable Incorpship** and project funding to take it forward. In term

Credits

The Trustees and many Friends have worked hard over the past year to deliver this Plan and several other viability documents to support our work. This has been made possible with generous grants and advice from both the **Architectural Heritage Fund** and the **Heritage Lottery Fund**.

We have also received tremendous help, advice and encouragement from the following individuals:

Mark Kitts — Assistant Director for Regeneration, Liverpool City Council.

Kate Kendal — Heritage at Risk Officer — Historic England.

Tamsin Cooke — Heritage at Risk Projects Officer — Historic England.

The Plan has been co-ordinated by our Trustees, **Graham Marshall** and **Tom Bradburn**.



Liverpool
City Council



Historic England



LOTTERY FUNDED



The Architectural
Heritage Fund

