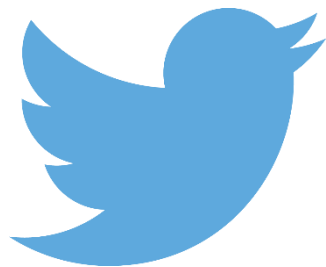




**Be part of the conversation!
Follow APSE on Twitter and LinkedIn**



@apseevents
@apsenews



**@APSE - Association for
Public Service Excellence**

Re-mobilising services post lockdown. Waste, Recycling and Street Cleansing

The restrictions implemented in response to the COVID-19 pandemic are being lifted, and local government services are now looking to remobilise their services

APSE Remobilisation working groups were established to highlight the plans that councils are considering, and currently implementing.

Remobilisation reports cover four key areas:

- Operational activity
- Regrouping the workforce
- Budget, finance and re-establishing commercial activity
- Technical Considerations

Operational changes

Whilst some council services had limited or ceased their operations, waste collection services were identified as a key service to ensure the public's waste was dealt with safely and regularly.

- Prioritisation of waste services – residual, recycling, green waste and bulky collections.
- Closure of HWRC's due to problems with social distancing
- Suspension or scaling down of street cleansing to allow staff to be redeployed to support waste collections
- Operating a 2 or 3 man crew still in the same cab became a major issue.
- Issuing of PPE, additional vehicles and changes to staff working regimes to reduce possibility of infection.



Operational Changes (2)

- Crews allowed to operate under the task and finish model.
- Providing new risk assessments in vehicle cabs and information on Coronavirus hygiene, symptoms etc.
- Providing handwashing stations, masks if requested, hand gel and gloves, Installing screens in vehicles ,Deep cleaning vehicles, providing driver cleaning kits at the beginning and end of the day, additional toilet facilities
- Constant stream of guidance being provided.
- **Reopening HWRC's** with new measures being introduced: booking or permit systems, restrictions on waste streams and numbers on-site at any given time, traffic management, communication campaigns to ensure problem-free reopening.

Re-grouping the workforce

- Reduction in numbers of staff available for work at the start of the restrictions (Absences up to 50% reported - **average 20%**)
- Reduced to near normal levels as clarity on shielding measures came into place
- Utilising staff from other areas where services have been temporally suspended or reduced to help with **higher volumes of household waste and recycling** due to more people working from home.
- Reduced numbers in vehicles, staggering finishing times to prevent staff congregating at depots, driver only to pick up the vehicle, picking-up crew at designated locations, keeping the same crews together as much as possible
- Councils have set up facilities for office staff to work from home and divert the phone lines to mobile numbers, thereby reducing exposure of staff to the public

Re-grouping the workforce (2)

- Most councils now expecting to have their full staff complement over the coming weeks.
- Many are still keeping on temporary staff, to cover increased requests for holiday leave which had been cancelled.
- Noted some staff who may have been classed as being at higher risk from COVID-19 were deployed to areas of less risk.

Budget, finance and re-establishing commercial activity

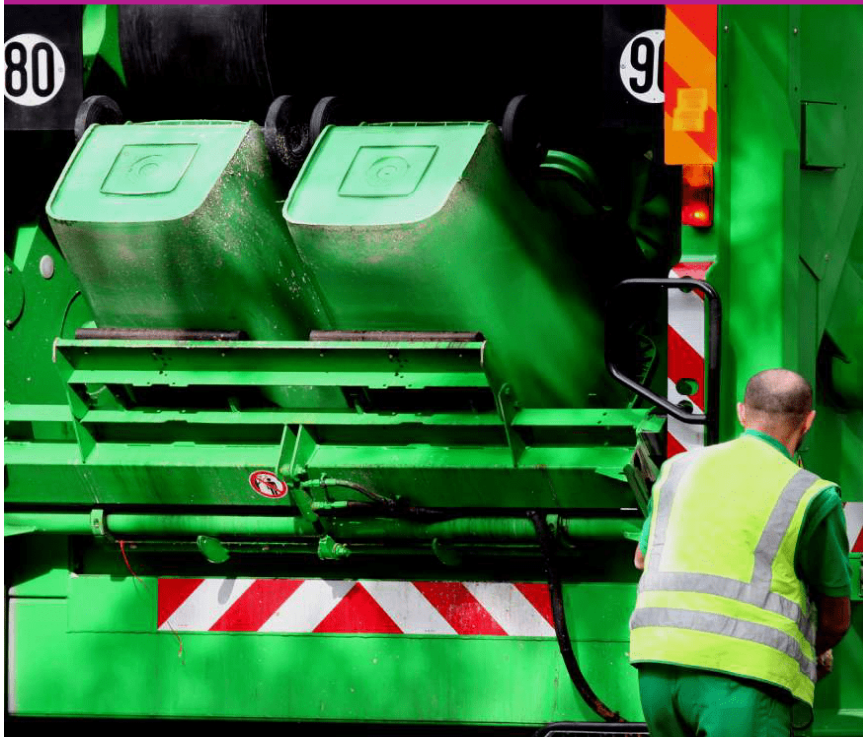
- Impacts of COVID-19 are going to be substantial for the short and long term.
- Governments' promise to reimburse councils for costs associated with COVID-19. Still a degree of uncertainty as to whether this reimbursement will cover all lost income.
- Some of the areas where additional costs have been so far incurred include:
 - provision of additional fleet to aid with collections due to increased tonnages
 - extra vehicles being brought in to reduce the number of operatives in vehicles.
 - extra staff, to cover staff who have been off sick with COVID 19 or those shielding.
 - suspended trade waste collections, bulky and chargeable garden waste collections
- Some local authorities have been able to recharge corporately any costs relating to COVID-19
- Services now being re-introduced to allow income generation to be recommenced.

Technical Considerations

- Most councils felt that there should not be any significant problems in bringing facilities and operational equipment back online as most had been operating.
- Risk assessments will have to be reviewed with particular emphasis being placed on social distancing, hygiene and health and safety.
 - practicality of plastic screening within cabs and issues of safe access and egress from vehicles, particularly given the risks presented by an RTA incident
 - the wearing of face coverings by drivers and any risk assessments particularly for those wearing spectacles
 - lone drivers and the operation of safety switches
 - dealing with public disposing of their own masks and face coverings and disposable gloves on to the streets.



**APSE Waste, Refuse Collection
and Street Cleansing Services
remobilisation report**



Waste, Recycling and Street Cleansing Remobilisation Report (June 2020)

<https://www.apse.org.uk/apse/index.cfm/news/articles/2020/covid-19-apse-information-hub/remobilisation-reports/waste-refuse-and-street-cleansing/apse-waste-refuse-and-street-cleansing-remobilisation-report/>

NEW MUNICIPALISM

Delivering for local people and local economies



Contact details

Wayne Priestley, Principal Advisor

Email: wpriestley@apse.org.uk



GB 11409



GB 11132



GB 14074

Association for Public Service Excellence

3rd floor, Trafford House, Chester Road,
Old Trafford, Manchester M32 0RS.

telephone: 0161 772 1810

web: www.apse.org.uk