



# LCC Grassland Management Strategy

**Will Griffith**  
Head of Public Realm  
Lancaster City Council

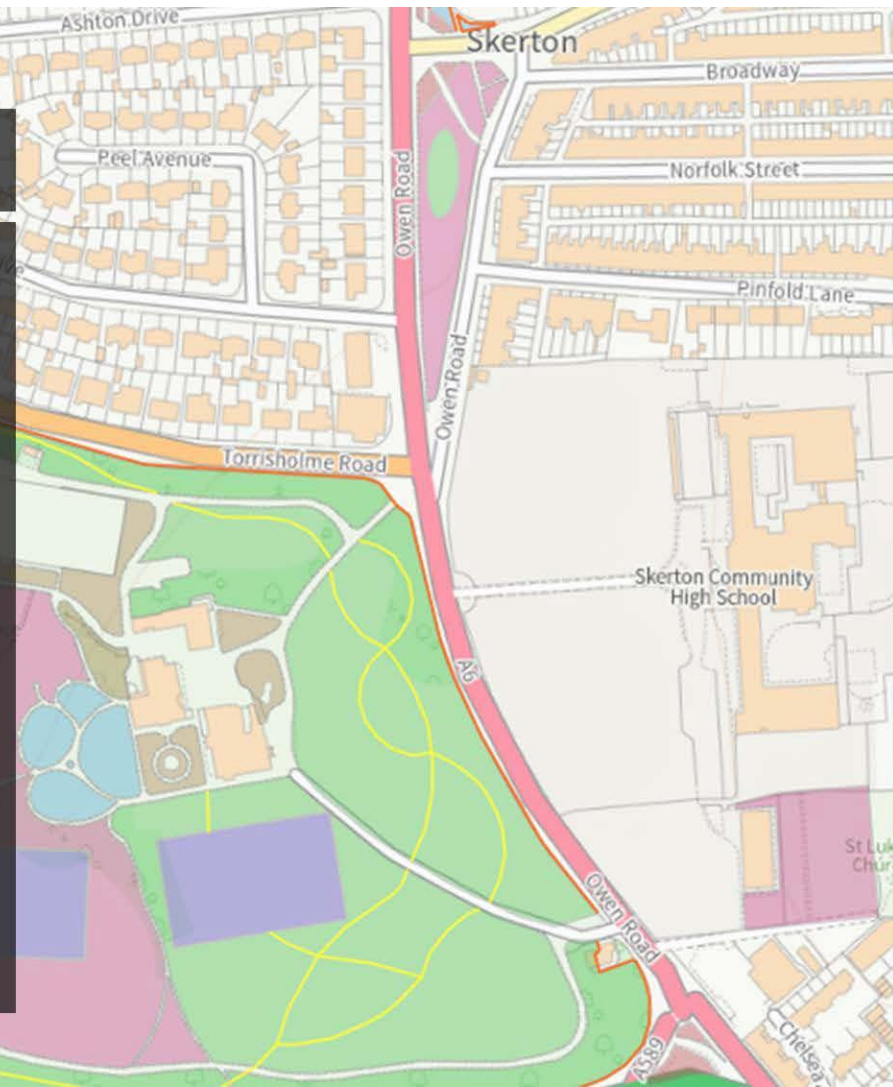
## Why develop a strategy?

- 97% of all grasslands lost since 1930's
- Loss of over 500 species
- < 1% of grasslands now wildflowers
- Help to deliver Councils ambitions
- Improved workload planning
- Creation of capacity for in house teams
- Offer a financial and CO2 saving



## Delivering the strategy

- Working with major stakeholders
- Understanding each sites needs
- 9 new management palettes
- Site sampling to reduce failure rate
- Implementing over 110,000 sq/m of wildflowers
- Creates capacity with in house teams to undertake other works
- Investment in staff development



## What do I pay my Council tax for?

- Acceleration of strategy through pandemic
- Consultation had to be detailed!
- Perception we are still doing something!
- Interpretation signage



## Community approach – cannot deliver alone!

- Area based operational teams
- Plants grown in our polytunnels by stakeholder groups
- Over 14,000 plug plants planted
- Over 1000 hours of volunteering to assist with implementation in Year 1
- Using local business and stakeholders to map biodiversity net gain

Location: Miss Whalley's Field





## This year – Year 2

- Continue to monitor and tweak operational approach
- First year biodiversity monitoring
- Deliver more planting at 10 new sites
- Working with Eden to bring 12 acres of habitat to the district
- Butterfly Conservation outreach

## Achievements & the future

- 27% increase in orchids in since Year 1
- Early community buy in
- Relations with Eden & NWC
- Delivery of a further 100,000 m<sup>2</sup> of wildflowers and 400,000 m<sup>2</sup> of meadow grasslands
- Staff development and training
- Local procurement & seed banks





THANK YOU!

Will Griffith

[www.lancaster.gov.uk/grassland-management](http://www.lancaster.gov.uk/grassland-management)