

The Benefits of a Robust Drug & Alcohol Policy

APSE Scotland Fleet, Waste and
Grounds Seminar 2025

27 May 2025



intelligent
fingerprinting

Hello, we're
Terry & Josh



Terry Elvin

Head of Sales (UK)
Intelligent Fingerprinting



Josh Klein-Davies

National Account Manager
Intelligent Fingerprinting

Why Are We Here?

Councils and public sector organisations are critical in protecting employees and the communities they serve. This duty extends across all operations, from frontline services to fleet and facilities.

Effective policies help ensure we meet this responsibility. However, policies are only as strong as their implementation and the commitment of those upholding them.

We are here today to discuss strengthening drug and alcohol policies to support safer, more compliant public services.



Intelligent Fingerprinting is a subsidiary of Intelligent Bio Solutions, a medical technology company delivering intelligent, rapid, non-invasive testing solutions.

Our mission is to redefine the approach to testing and deliver non-invasive, pain-free, accessible solutions that drive transformative change and improve the quality of life.

Slide 4

TE0

Need the IBS Logo adding

Terry Elvin, 2025-05-13T13:04:08.579

MT0 0

I added the logo and introduced IBS in the slide for context. Are you okay with this edit?

Michelle Talarico, 2025-05-14T01:36:03.172

Chosen by 450+ Customers Across 27 Countries Worldwide



Safeguarding Roads, Services, & Public Trust

Scottish councils depend on safe, reliable fleet operations to deliver essential services.

Substance misuse can threaten these operations. It jeopardises frontline safety, disrupts core services, and increases the risk of scrutiny, liability, and reputational damage.

So, how can councils manage this risk effectively?

By implementing and enforcing a clear and robust Drug & Alcohol Policy.

Slide 6

TE0 I've added a couple of statements ... thoughts?

Terry Elvin, 2025-05-13T13:24:36.380

MT0 0 @Terry, great idea as it intros the next slide nicely. I've adjusted the wording slightly.

Michelle Talarico, 2025-05-14T01:11:34.443

The Risks of an Ineffective Drug & Alcohol Policy



- No deterrent or consequence.
- Greater chance of hiring people who have substance misuse issues.
- Losing experienced workers who care about safety.
- Increased risk to employees and the general public.
- Potential damage to your reputation and trust.
- Heightens legal and regulatory risk following safety-related incidents.
- Increased costs from service delays, complaints, employee performance and efficiency.

Safeguarding Council Services Through Policy

- Sets clear expectations for staff conduct and safety standards.
- Enables consistent testing across safety-critical roles.
- Supports legal compliance and public safety obligations.
- Provides pathways for staff support through rehabilitation, education, and wellbeing resources.
- Reinforces trust with the public, elected officials, and union stakeholders.
- Minimises risk of service disruption, reputational damage, and legal exposure.
- Ability to demonstrate the organisation is doing everything reasonably practicable to mitigate risk.



Alcohol Culture & The Impact of Drink Driving

Drinking Culture

- 22% of adults in Scotland report drinking at levels exceeding the UK Chief Medical Officers' low-risk guidelines (Scottish Health Survey 2022)

The guidelines recommend no more than 14 units per week, spread over three or more days

- Beer/Cider (4% strength): 6 pints
- Wine (13% strength): 6 medium glasses (175ml)
- Spirits (40% strength): 12 glasses (25ml)

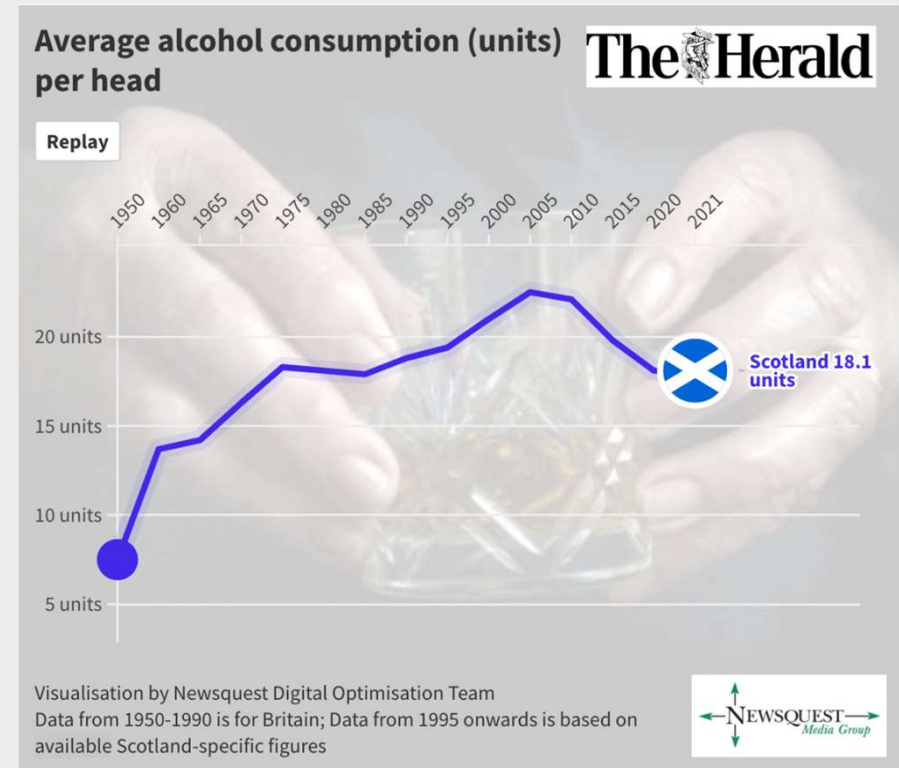


	PINT OF BEER ABV 4% (568 ml)	BOTTLE OF LAGER ABV 6% (330 ml)	SPIRITS (SINGLE) ABV 40%	SPIRIT (DOUBLE) ABV 40%	LARGE GLASS WINE ABV 12% (250 ml)
NO. OF DRINKS	NUMBER OF HOURS TO CLEAR YOUR SYSTEM				
One	2.5	2.5	1.5	3.5	3.5
Two	5	5	3	6	7
Three	7.5	7.5	4.5	9	10.5
Four	10	10	6	12	14
Five	12.5	12.5	7.5	15	17.5

Source: [AlcoSense Laboratories \(2022\)](#).

Alcohol Consumption in Scotland

- According to the Scottish Health Survey, adult drinkers consumed an average of 12.6 units per week in 2022, based on [self-reported](#) habits.
- However, retail sales data from Public Health Scotland reveals 18.1 units were sold per adult per week in 2021 — 25% above the UK's low-risk guideline of 14 units.
- The gap between reported and actual consumption highlights how alcohol use is often underestimated. Policy decisions should reflect this.



Source: [The Herald Scotland](#)



Drug-driving Fatalities +164% In The Last Decade

- Cocaine and cannabis are the most common drugs detected in deceased drivers
- Eight per cent of all road fatalities can be linked to drug driving
- Deceased drivers aged 20 – 29 are the most likely to test positive for illegal drugs

Fatalities linked to drug driving¹ on UK roads have increased by 164 per cent in less than a decade, from 47 in 2014 to 124 in 2023.

Drug driving deaths accounted for eight per cent of all road fatalities last year (2023: 1,624 total fatalities)³.

The analysis revealed an increase in overall collisions attributed to drug driving, up 170 per cent in less than a decade, from 684 in 2014 to 1,853 in 2023.

The most common age group for deceased drivers to test positive for illegal drugs was 20–29, followed by those aged 30–39.

In the 12 months to the year ending March 2023, approximately 3.1m(9.5%) of those aged 19-59 were reported to be using illicit drugs.

Drugs in reported road fatalities in Great Britain, data to 2022: summary - GOV.UK (www.gov.uk). 2023 data not yet released for this

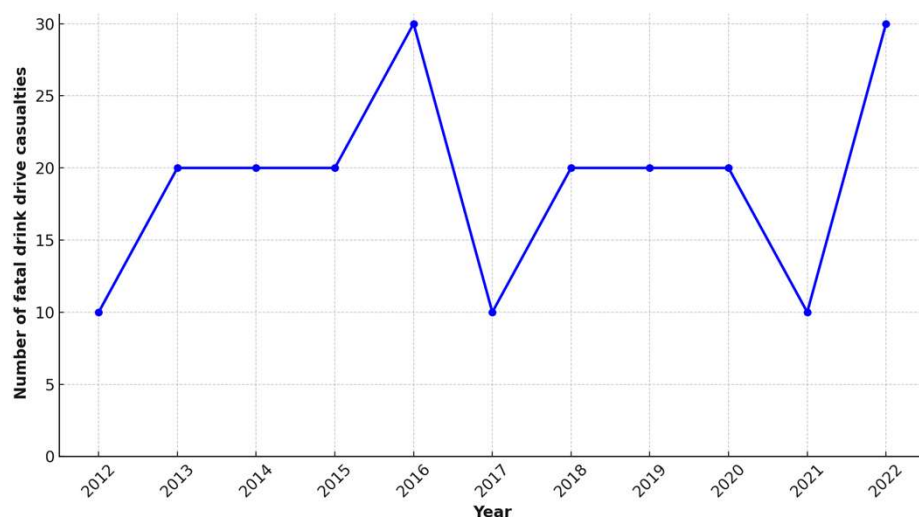
Drugs in Reported Road Fatalities in Scotland

- Between 2015 and 2020*, 48 fatal road collisions in Scotland involved drivers impaired by drugs
- An additional 34 collisions involved both drugs and alcohol, indicating that drugs were a factor in at least 82 fatal crashes over the five years.
- This total surpasses the 45 collisions involving alcohol alone, underscoring the growing role of drug impairment in road fatalities.

**This is the most recent publicly available data, from Transport Scotland's in-depth forensic review of fatal collisions.*



Estimated Number Of Reported Fatal Drink Drive Casualties (Scotland, 2012 To 2022)



Source: [Transport Scotland: Reported Road Casualties Scotland 2022](#)

Scottish Drink Driving Road Deaths Triple in a Year

- A report by Transport Scotland revealed that 30 people were killed by drivers over the legal limit in 2022. There were 10 deaths in 2021.
- The total number of casualties was also up by nearly 50%, with 310 people injured compared with 210 the previous year.
- Across the whole of the UK, the number of fatalities increased to the highest level since 2009.

Your D&A Policy - Drug Testing Rationale

When & Why?



Pre-Employment

Establish a drug-free workplace by setting clear expectations and identifying potential issues before onboarding.



Random

Strengthen deterrence by randomly testing a percentage of staff yearly, boosting compliance and effectiveness.



For Cause

Take action immediately when an employee shows signs of impairment to ensure safety and compliance.



Post-Incident

Determine the potential cause of an incident. Shorter detection windows provide more accurate indications of impairment.

Drug Screening Test Types



Urine

WOD 1-7 days +

Urine tests can be time-consuming, invasive, biohazardous, and are often susceptible to cheating.

Observed sample collections require specialised facilities and gender-specific collection processes.



Saliva

WOD 1-3 days

Saliva samples can be challenging to collect due to dry mouth and nil-by-mouth waiting periods.

They can also be unpleasant, invasive, and require biohazardous disposal.



Fingerprint Sweat

WOD 16-24 hrs

Fingerprint sweat tests are non-invasive, hygienic, and eliminate the need for biohazardous waste disposal.

They provide a quick, discreet, and reliable alternative to traditional drug testing methods with minimal disruption to the workplace.

The Hidden Costs of Drug Testing



Call Out Fees

Vary considerably and are subject to change

Tend to have a minimum two-hour response time

Out-of-hours costs are significantly higher



Laboratory Costs

Additional charges when multiple drugs are detected

Reporting times vary, delays mean longer suspension times



Labour Costs

Time spent preparing facilities

Delays due to shy bladder and adhering to nil-by-mouth protocols

The longer the detection window, the more staff suspended



Specialised Facilities

Private or gender-specific facilities needed

More equipment needed

Preparation time

Not all locations can accommodate the necessary requirements



The Intelligent Fingerprinting Drug Testing Solution

The Intelligent Fingerprinting Drug Screening System is an on-the-spot, 10-minute drug screening test that analyses sweat from the fingertips to identify recent drug use, including cannabis, cocaine, opiates, and methamphetamine.

How it Works



Drug Metabolites

Our bodies metabolise substances into detectable chemicals (metabolites) in blood, urine, saliva, and sweat.



Sweat Detection

The Intelligent Fingerprinting System detects recent drug misuse by screening metabolites in sweat from fingerprints.



Detection Window

The system tests for “fitness for duty” on the day and has a detection window of 16-24 hours.



Lateral Flow Technology

The cartridge uses lateral flow assay technology and fluorescence-labelled antibodies providing fast, presumptive results for each drug tested.

Slide 18

TE0

I think we will omit this slide as it doesn't add value, the other slides cover it and will avoid repetition

Terry Elvin, 2025-05-13T13:15:47.934



Simpler, Smarter Drug Testing

The Intelligent Fingerprinting Drug Screening System delivers impartial, reliable results through an advanced reader and automated analysis that minimises human error.

With consistent outcomes, batch testing capabilities, and a non-invasive process, it offers a cost-effective and efficient approach to workplace drug testing.

Unlike traditional methods that can involve large amounts of paperwork, our digital system allows test results to be easily downloaded, shared, and sent electronically.

Drug Screening Demonstration





Our fingerprint sweat-based drug testing system meets the unique demands of councils and public sector teams.

On-the-Go Testing

Conduct tests anywhere – depots, on-site, or roadside, without specialised facilities.

Fast & Non-Invasive

Quick, hygienic fingerprint analysis respects employees time and privacy.

Immediate Results

Receive accurate, on-the-spot results in minutes for swift decisions.

Flexible Integration

Easily incorporate testing into pre-shift routines or random checks.



An End-to-End Testing Solution

Ensure confidence in every result with a secure chain of custody and lab reporting.

Our solution provides robust, legally defensible outcomes backed by industry accreditations.

Slide 22

TE0

I've changed this slide to remove Tamper Evident bag. Its a shame it isnt the lab cartridge being handled,.

Terry Elvin, 2025-05-13T13:17:13.764

Sweat *not Biometrics*

Myth:

This test collects biometric data

Fact:

The test does not scan, store, or use fingerprint patterns. It simply analyses **sweat** from the fingertips to screen for common drugs of abuse.

How The Sample is Destroyed

Once the fingerprint sweat sample is collected, it is destroyed and cannot be reused. Here's how the process works:

1

Collection on a Disposable Cartridge

The test involves pressing ten fingertips onto a small collection pad that absorbs sweat from the skin. This pad is part of a single-use cartridge, ensuring no reuse or retention of samples.

A buffer solution is released and **dissolves the sweat sample** as it flows through the cartridge.

2

Analysis by the Reader

The cartridge is inserted into an automated reader that analyses the cartridge to provide a preliminary result.

This process is objective, automated, and tamper-evident, preventing human interference.

3

Sample Destruction

Once the analysis is complete, the cartridge cannot be reprocessed or retested.

The sample dries and degrades naturally, making it unusable for any further testing or extraction.

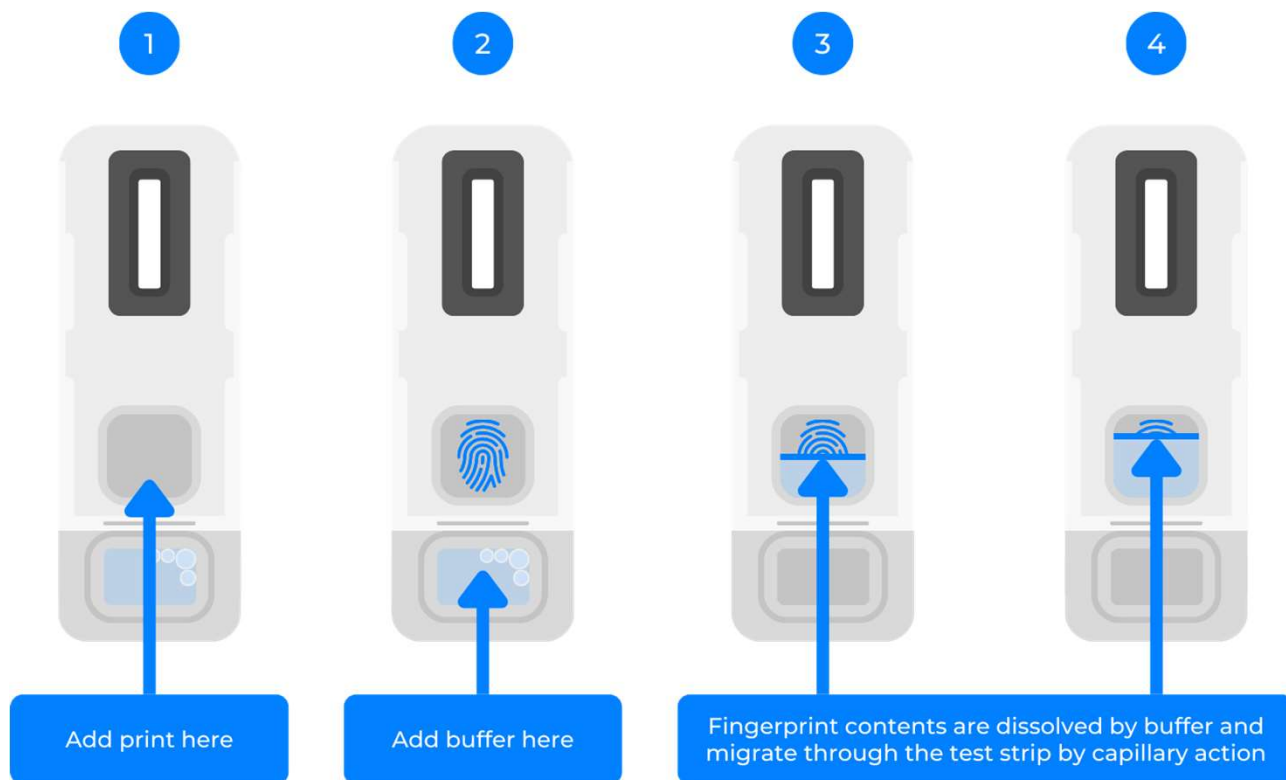
The cartridge can then be safely disposed of, with recyclable elements reducing environmental impact.

Slide 24

TE0

I've hidden this slide, the first slide will be enough as limited for time.

Terry Elvin, 2025-05-13T13:18:10.880



How The Sample is Destroyed

Unlike urine or saliva tests, there is no biohazardous waste, and no stored samples that could raise concerns about privacy or secondary testing.

TE0 Again hidden
Terry Elvin, 2025-05-13T13:18:22.383

Breath Alcohol Testing with the Alco-Sensor®

The **Alco-Sensor®** Intoximeter delivers simple and accurate breath alcohol test results.

Users blow into a mouthpiece or, alternatively, liquids are tested using a cup attachment.

When paired with our Drug Screening System, the two devices form an economical and portable solution for full drug & alcohol testing.



Advantages of the Alco-Sensor® Intoximeter



Efficient & Accurate

Detect alcohol up to 13 hours after consumption with precise results in seconds.



Lightweight & Portable

The compact device weighs under 250g for easy on-site use.



Cost-effective

Quick, accessible solution for point-of-care alcohol testing.



Safe & Hygienic

Minimises breath particle exposure with filtered sample collection.



Accreditations & Certifications

Evidential-grade results supported by recognised industry certifications.

Training Programme

We offer a range of certified training packages, both online and face -to-face, to ensure competency and instil confidence.



Quality Assurance

We hold the relevant accreditations required for workplace drug and alcohol testing policies.



Our Support Services



Knowledge Hub

Access to digital assets, guides, and support videos, helping users find the resources they need for 24/7 assistance



Designated Customer Support Team

Provide experienced assistance with a quick response turnaround



Training

We offer a range of certified training packages, both online and face to face to give confidence to the user and ensure competency

Interested in
**Fingerprint
Drug Testing?**

We will make this presentation
available after todays event.

Contact us to learn more, schedule
a **10-minute consultation** or a
30-minute demo to see it in action.

Thank You

www.intelligentfingerprinting.com

