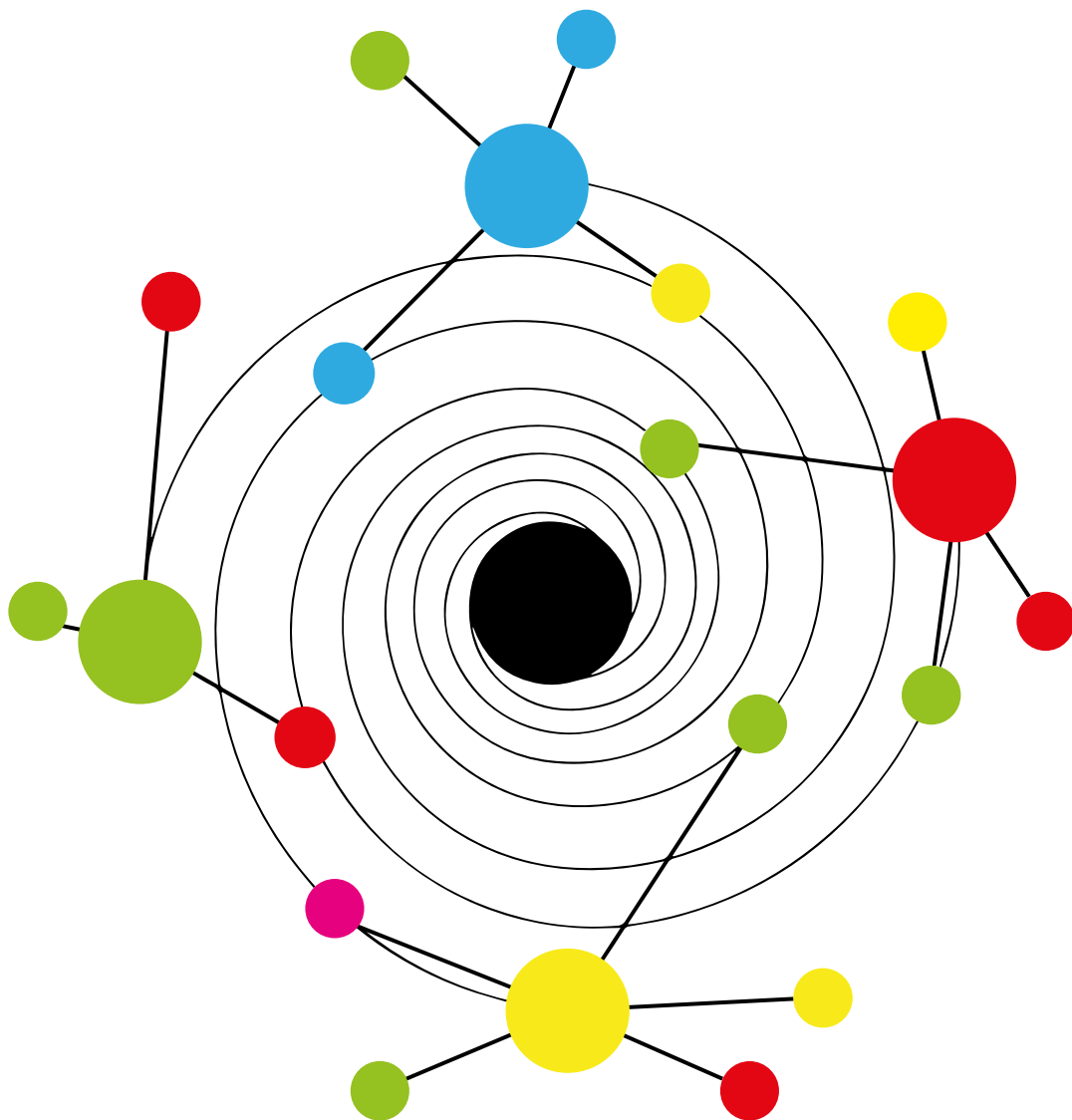




LOCAL GOVERNMENT
COMMISSION 2030

The APSE Local Government Commission 2030 final report

An independent inquiry into the future of local government



Thursday 22 July 2021

The Midland, 16 Peter Street, Manchester, M60 2DS

Programme

10:30 Registration, coffee and breakfast rolls

11:00 The commission panel

Chair of the commission: Paul O'Brien

Overview of the commission findings and recommendations

Commissioner Panel

Lord Gary Porter, CBE

Revitalising local government and developing a new relationship with central governments across the UK

Elma Murray, OBE

Addressing inequalities and engaging communities

Heather Wakefield

Making our organisations and workforce fit for the future

Jon Collins

Creating a sustainable financial settlement for local government

Neil Schneider

Revitalising local democracy, representation and accountability

Commission launch – with live stream

(Segments on commission themes launched to plenary audience)

12:00 Commissioner Panel and Audience Q & A

An opportunity for a discussion with the Commissioners, academic advisors and APSE member councils

Academic Panel: Professor Steven Griggs, De Montfort University, Arianna Giovannini, Associate Professor/Reader in Local Politics and Public Policy, De Montfort University, Neil Barnett, Senior Lecturer in Public Policy, Leeds Beckett University

13:00 Lunch

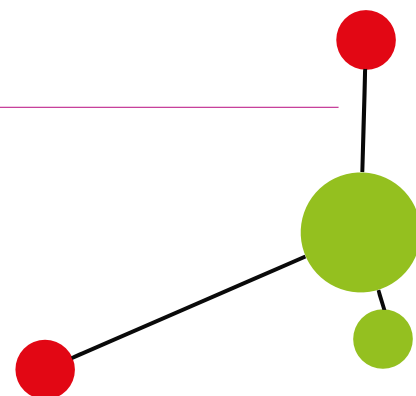
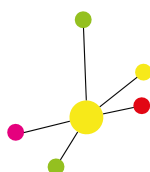
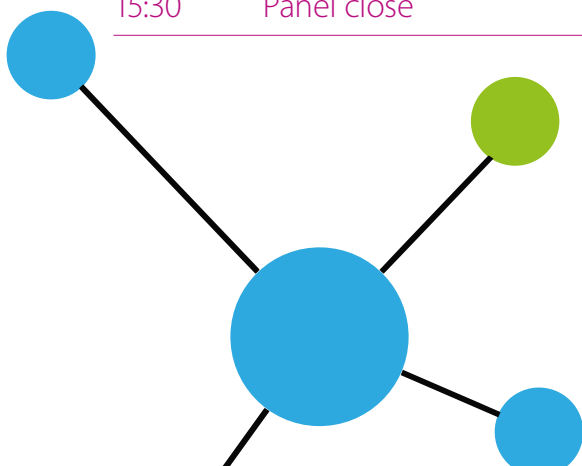
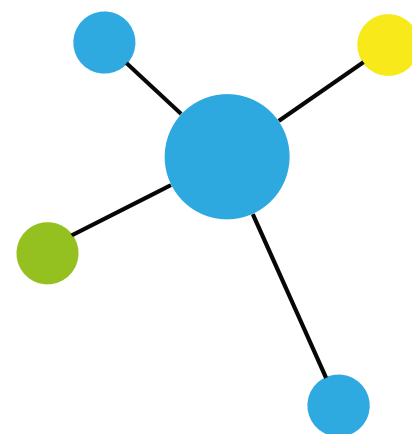
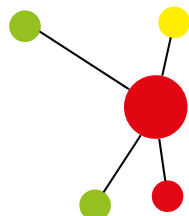
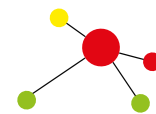
14:00 Respondent Panel Symposium

Colin Everett, Chief Executive, Flintshire Council

Katie Kelly, Deputy Chief Executive, East Ayrshire Council

Andy Burns, Associate Director, CIPFA

15:30 Panel close



Seminar Objectives

About this event

The APSE Local Government Commission 2030 was set up to explore the role of local government looking forward to 2030. The initial scope of the Commission was extended in light of the COVID-19 health pandemic. Whilst some of the earlier evidence gathering happened through face-to-face witness sessions the pandemic restrictions meant that later evidence gathering happened online. However, during the course of the Commission, the Commissioners and their academic advisors were able to explore hundreds of written and oral evidence submissions, test their emerging findings, and arrive at a unique report which focuses on the challenges and opportunities for local government in the coming decade. This event is therefore to share first-hand the final report of the Commission.

As well as the strategic issues of structures, finance, equalities, democracy and engagement the Commission also draws upon practical and pragmatic responses in local government services in responding to post-COVID recovery, climate change and rebuilding communities and local economies.

The Importance of APSE Members

The Commission Chair is clear that this report is to reflect on the challenges and determination of APSE member councils as they face the next decade; not only with the existing frontiers of sustainable finance, climate change and the local environment, and local economies, but the added burden of recovering from a health emergency which is unprecedented in modern times.

This event will therefore be an opportunity for interactive discussion with the Commission panel, academic advisors and respondent panellists.

Swapping Teams for Dreams!

This event is open for in person attendance to a limited number and therefore, initially, this event will be restricted to **two in-person bookings per authority**.

An event highlights recording will be made available to those unable to attend the event or join the livestream broadcast.



About the Venue

The Midland Hotel Manchester dates back to 1903 and is the venue where the famous partnership of Rolls and Royce was formed. Located in Manchester City Centre the venue is around 10 minutes' walk from both Manchester Piccadilly and Victoria Railway Stations. There are also plenty of other public transport options including the City Centre shuttle bus services and Metrolink services. [Transport for Greater Manchester's Journey planner is here.](#)

For SatNav please use postcode **M2 3NQ** to reach the hotel. There are nearby parking options but please check for availability and prices before you travel.

The full venue address is: **The Midland, 16 Peter Street, Manchester, M60 2DS**

Booking Details

Delegate Information

Delegates will receive any relevant documentation including a showreel of highlights following the event.

This event is **FREE** for APSE member authorities.

Bookings for this event are restricted to **two delegates per authority**.

Click [here](#) to reserve your place on this event

CANCELLATION & REFUND POLICY: Reservation is a contract. Substitution of delegates is acceptable any time in writing by email to CKing@apse.org.uk. Cancellations must be made in writing at least 10 working days before the event, and will incur a 20% administration fee. No refunds can be given for cancellations received less than 10 working days before the event or for nonattendance. In the unlikely event of cancellation by the organisers, liability will be restricted to the refund of fees paid. The organisers reserve the right to make changes to the programme, speakers or mode of delivery should this become necessary. If due to emergency action by UK Governments/Administrations or Public Agencies this event is postponed, for example for reasons of public health and safety, the organisers will transfer your booking to the replacement event or provide a credit voucher against a future event booking.